



Presentation for the

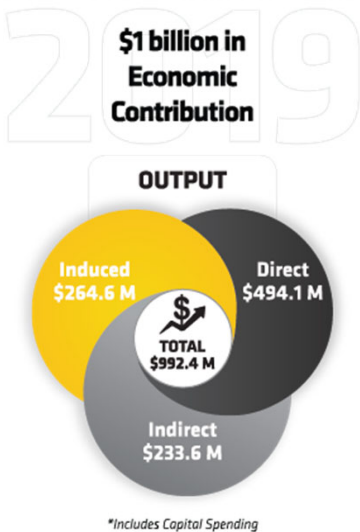
House Appropriations Committee

Rick Muma, Wichita State Interim President

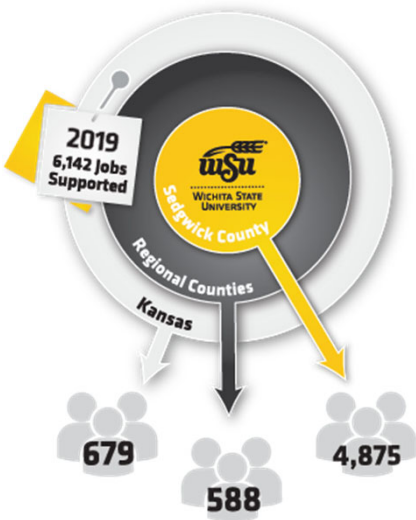


Our Impact

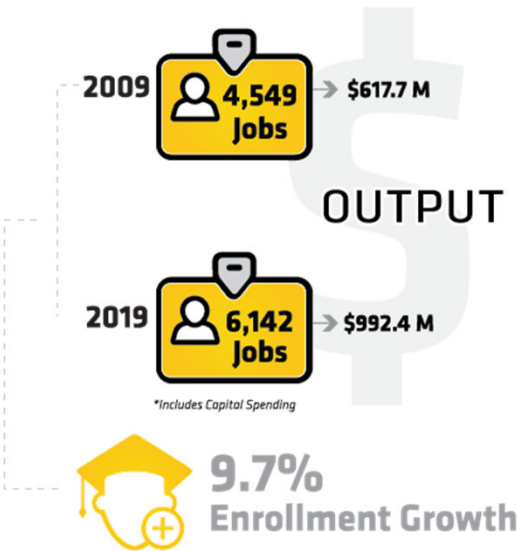
An Economic Driver



Generate Jobs Across the State

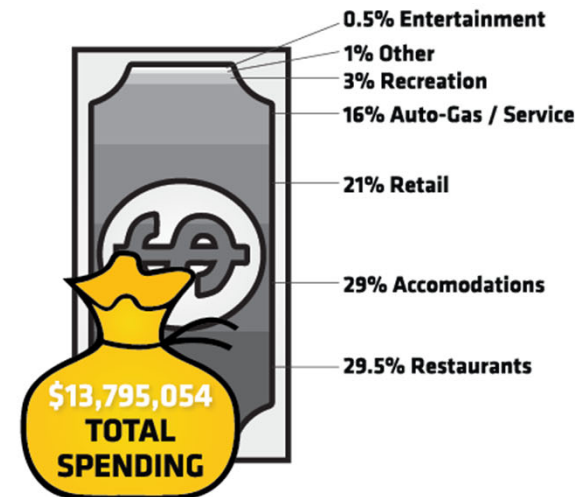


Continue to Grow in Economic Contributions



Our Impact

Provide Cultural Amenities



HOW WILL WICHITA STATE CONTINUE TO RESPOND?

Wichita State...

- Strives to be one of that nation's most innovative urban public research universities.
- We are committed to the Kansas Board of Regents' *Build a Future* plan in which we will:
 - Support families by providing an affordable education and a great student experience.
 - Support businesses by providing a talent pipeline that meets their needs.
 - Support increasing the economic prosperity of our community.
- We have a strong strategic plan to make this happen!

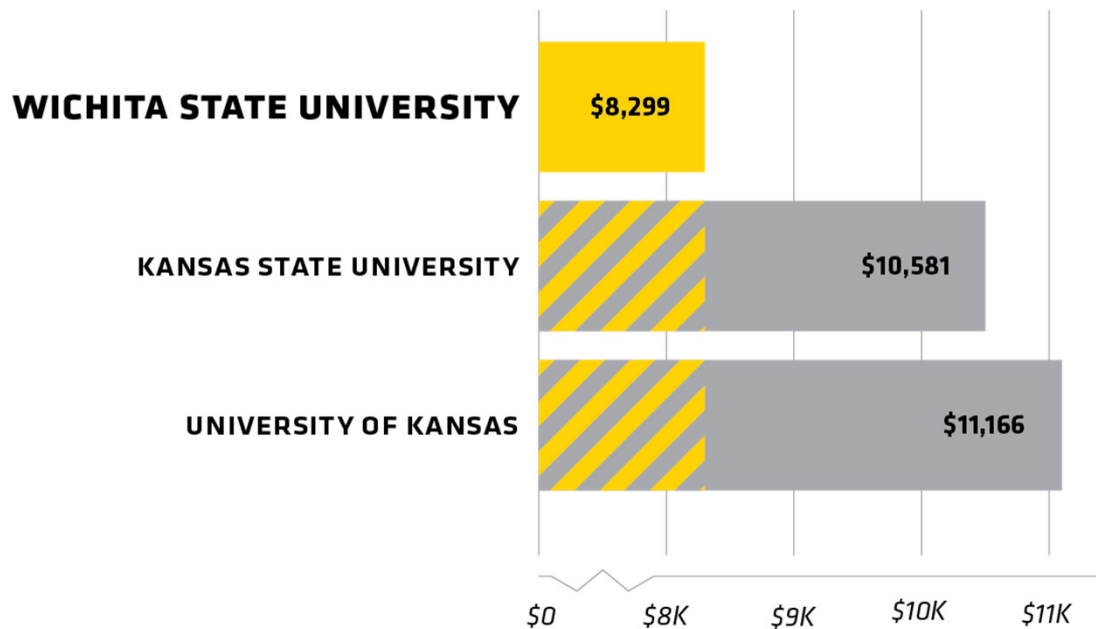




Affordable Education

Affordable and Impactful Education

KANSAS RESEARCH UNIVERSITIES

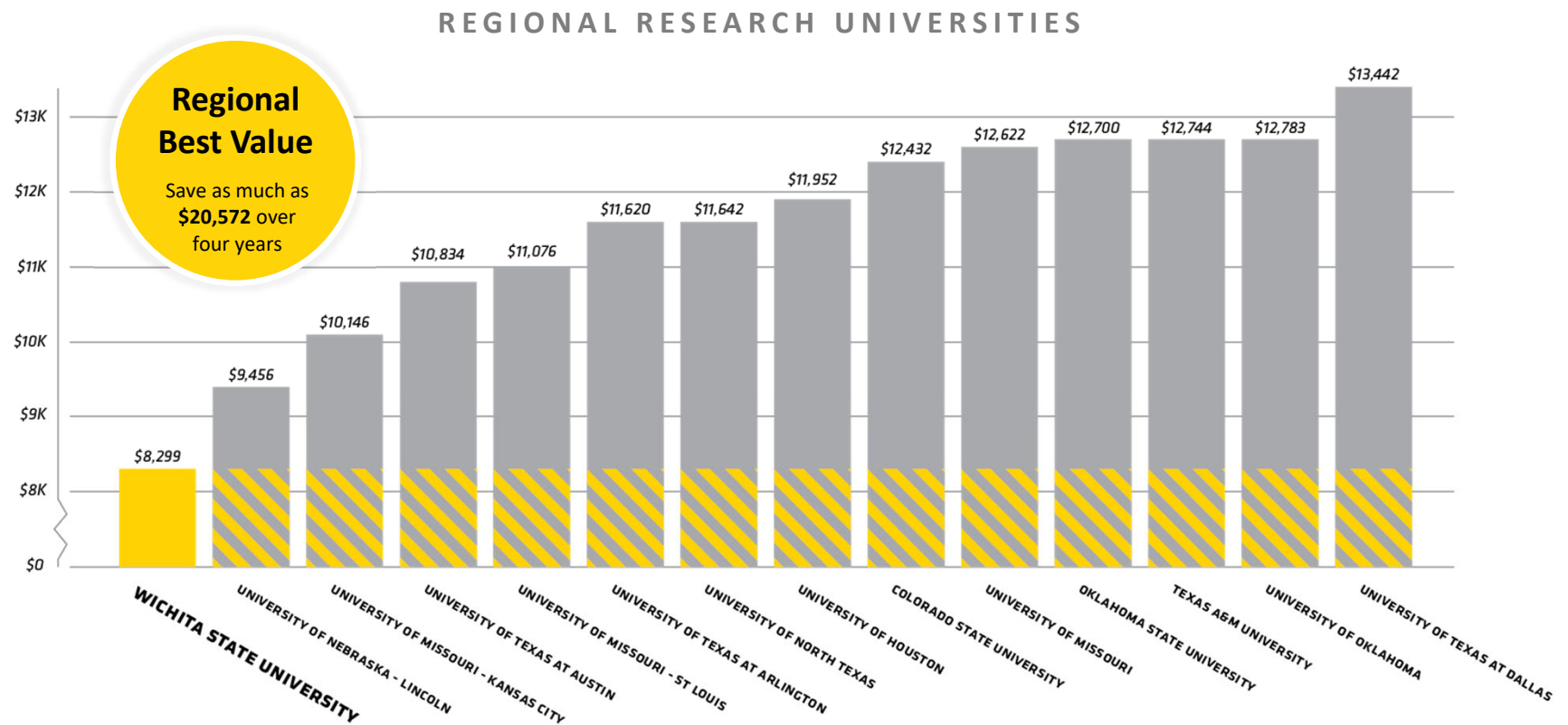


Kansas' Best Value

Save as much as
\$11,468
over four years.

*Costs from Kansas Board of Regents website for 2019-20 school year.
WSU's rate does not reflect proposed 2% increase for 2020-21.

Accessible, Affordable and Impactful Education

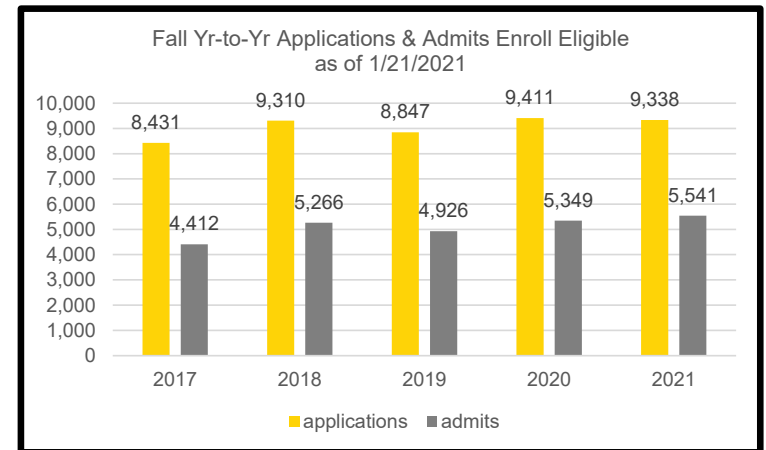


*Comparing WSU's in-state rates to other institutions' in-state rates

Enrollments and Application Trends

Increases in Wichita State Enrollment

2000 to 2020	2010 to 2020	2016 to 2020
5.0%	5.0%	7.4%





Talent Pipeline

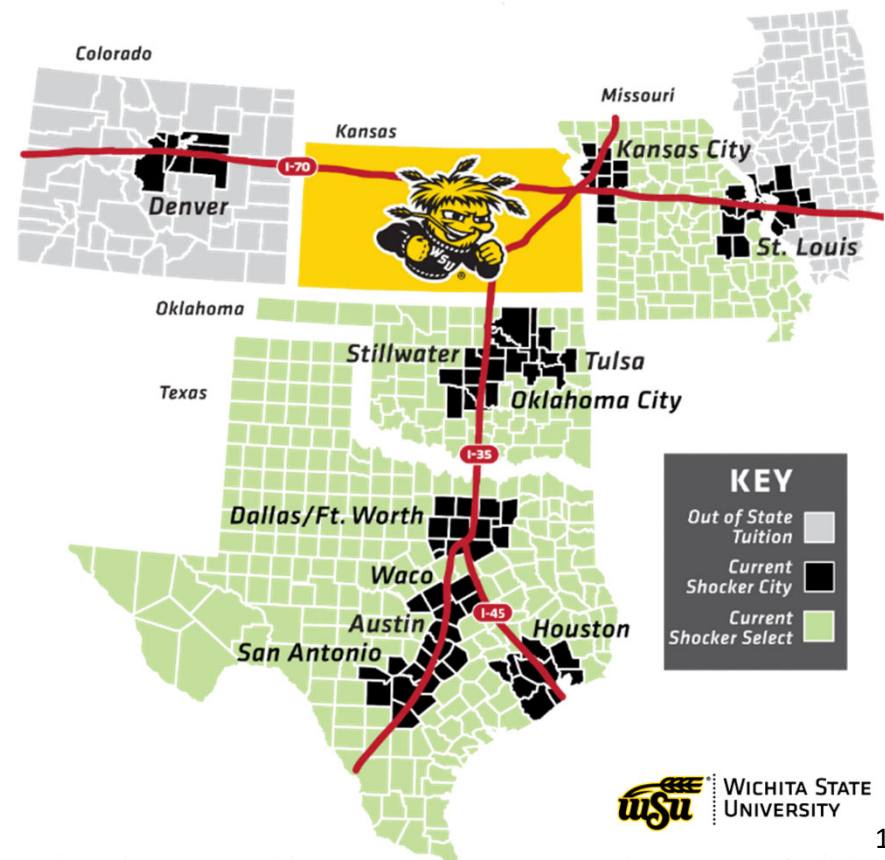
A Trend to Reverse

- For the fifth straight year, more people **have left Kansas** than moved in.
- **Kansas ranked #5** out of the top 10 states that have seen the **most outbound migration** in the past year.
- The biggest reason people cited for their move out of Kansas **was to find a job** (63.82%).



Recruiting Talent to Wichita

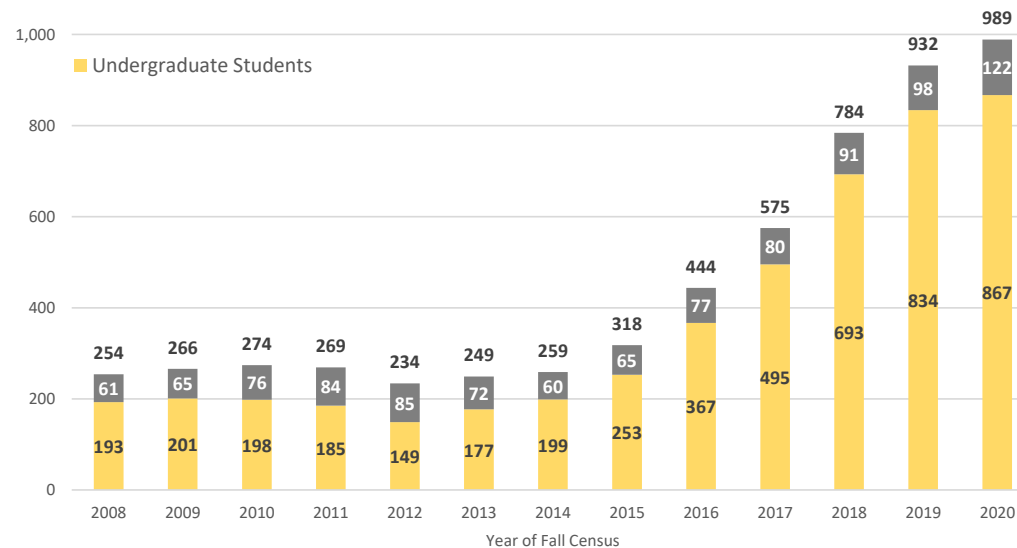
Metro Area	2010	2018	Growth
Wichita	631,000	644,888	13,888
Dallas FW-Arlington	6,426,000	7,540,000	1,114,000
Houston Area	5,920,000	6,997,000	1,077,000
Austin-Round Rock	1,716,000	2,168,316	452,316
McAllen, TX	774,000	866,000	93,000
St. Louis, MO-IL	2,787,701	2,805,465	17,764
Kansas City, MO-KS	2,009,000	2,143,651	134,651
Oklahoma City, OK	1,252,987	1,396,445	143,458
Tulsa, OK	937,000	994,000	57,000
Omaha, NE	865,000	942,000	77,000
Colorado Springs, CO	646,000	739,000	93,000



I-35 Corridor Strategy

- Enrollment has increased along the I-35 corridor by close to 200% since 2014 (average increase of 30% per year)
- 70% of WSU undergraduates (who graduate) stay in Kansas, compared to 48% of all state universities combined - 1 year after graduation*

Wichita State University
I35* Corridor Enrollment
Fall Census



*I35 covers the states of Missouri, Oklahoma &

Wichita in the Ranks

Of 100 largest U.S. metro areas
WICHITA RANKS #1
in manufacturing jobs as a
percentage of all jobs.

Brookings calls South Central KS the
**MOST MANUFACTURING-SPECIALIZED
REGION IN THE UNITED STATES**

with 17.7% of regional jobs in manufacturing, more than half of which
are engaged in making some of the world's most sophisticated aircraft.



Wichita, KS

Advanced industry hotspot
RANKED #3 NATIONALLY.

Of 100 largest U.S. metro areas
WICHITA RANKS #1
in percentage of jobs involving
science, technology, engineering
and math (STEM occupations).
Bookings Institution Rankings

Highest concentration of aerospace
manufacturing employment
IN THE NATION.

America's Engineering Hubs:

The Cities With The Greatest Capacity For Innovation

WICHITA RANKS #3

among metros for
highest concentration
of engineers per
1,000 employees
(22.4/1,000).

*"Where engineers concentrate,
we can expect the greatest
capacity for innovation."*



GROWING & DIVERSIFYING ECONOMY

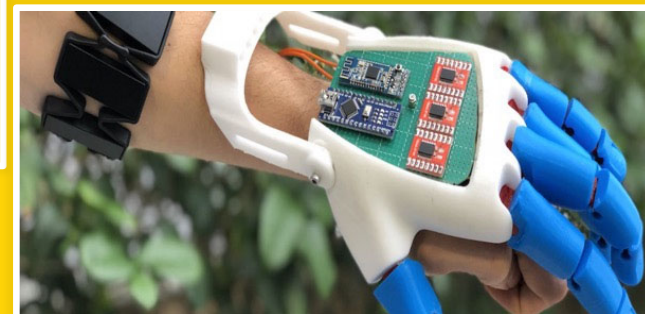
Preparing our students for the jobs of today + tomorrow



National Institute
for Digital Transformation



SMART
Manufacturing



Health Sciences
and BioEngineering

Digital Transformation Timeline/Background

- In April of 2020, the Kansas Board of Regents gave us approval to formally establish The National Institute of Digital Transformation (NIDT) after two years of planning
- NIDT is based on the model and strengths of NIAR but focused on developing technology that can transform other industries, not excluding aviation, to drive economic development and support new ventures in Kansas



- Focusing on Digital Technologies across multiple industries
 - Big Data
 - Hybrid Cloud Infrastructure (Public, Private, Hybrid)
 - Artificial Intelligence (AI) and Machine Learning (ML)
 - AR (Augmented Reality) and VR (Virtual Reality)
 - Cyber Security
 - IOT (Internet of Things) and Wearables
 - Real-Time Analytics & Reporting
 - Cloud Apps and Mobile Solutions
 - Customer Experience (CX) and Social Marketing
- Immediately serving anchor industry partner and scaling to serve the industry sectors identified in BREG – Blueprint for Regional Growth
 - Advanced Manufacturing and Materials
 - Aerospace
 - Healthcare
 - Oil & Gas
 - Agriculture
 - Transportation & Logistics

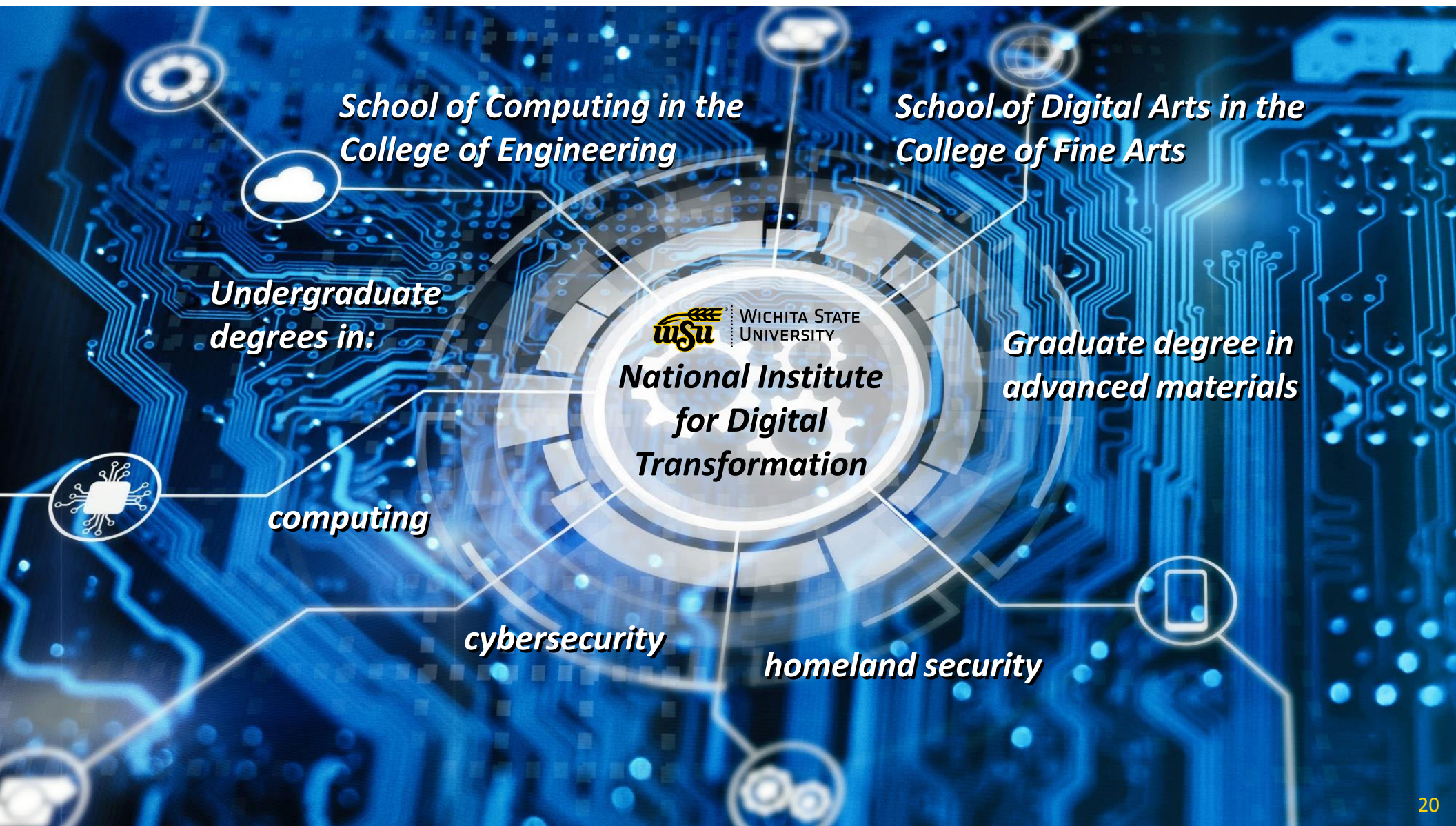
Support Business: Talent Pipeline Needed for Digital Transformation



Support Businesses: Talent Pipeline

- Digital Transformation
 - New graduate degrees:
 - Business Analytics – W. Frank Barton School of Business
 - Data Science – College of Engineering
 - Mathematical Foundations of Data Analysis – Fairmount College of Liberal Arts and Sciences
 - New undergraduate degree
 - Applied Linguistics — Fairmount College of Liberal Arts and Sciences





*Increasing the economic
prosperity of our community*



Research and Innovation

- Industry from Kansas (NetApp) as well as national and global industrial partners (Deloitte) will have a new presence in Wichita working in the NIDT.
- In collaboration with university teams, we will, for example, conduct development and certification programs in the NIDT enabling increased speed to market of new globally competitive products, processes and businesses.





Molecular Diagnostics Laboratory WICHITA STATE UNIVERSITY



COVID-19 Tests Resulted
Oct. 19 2020 - Jan 20, 2021

60,000

Increasing weekly by 10,000 tests

175,000

Test Kits Assembled

34,000+
Nasopharyngeal

107,000+
Saliva

33,000+
Oropharyngeal



Molecular
Diagnostics
Laboratory

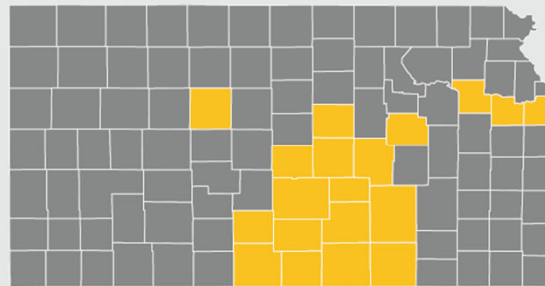
WICHITA STATE UNIVERSITY

2000+

Registered Users Trained
as Specimen Collectors

The WSU MDL has
tested residents in...

59
Kansas
Counties



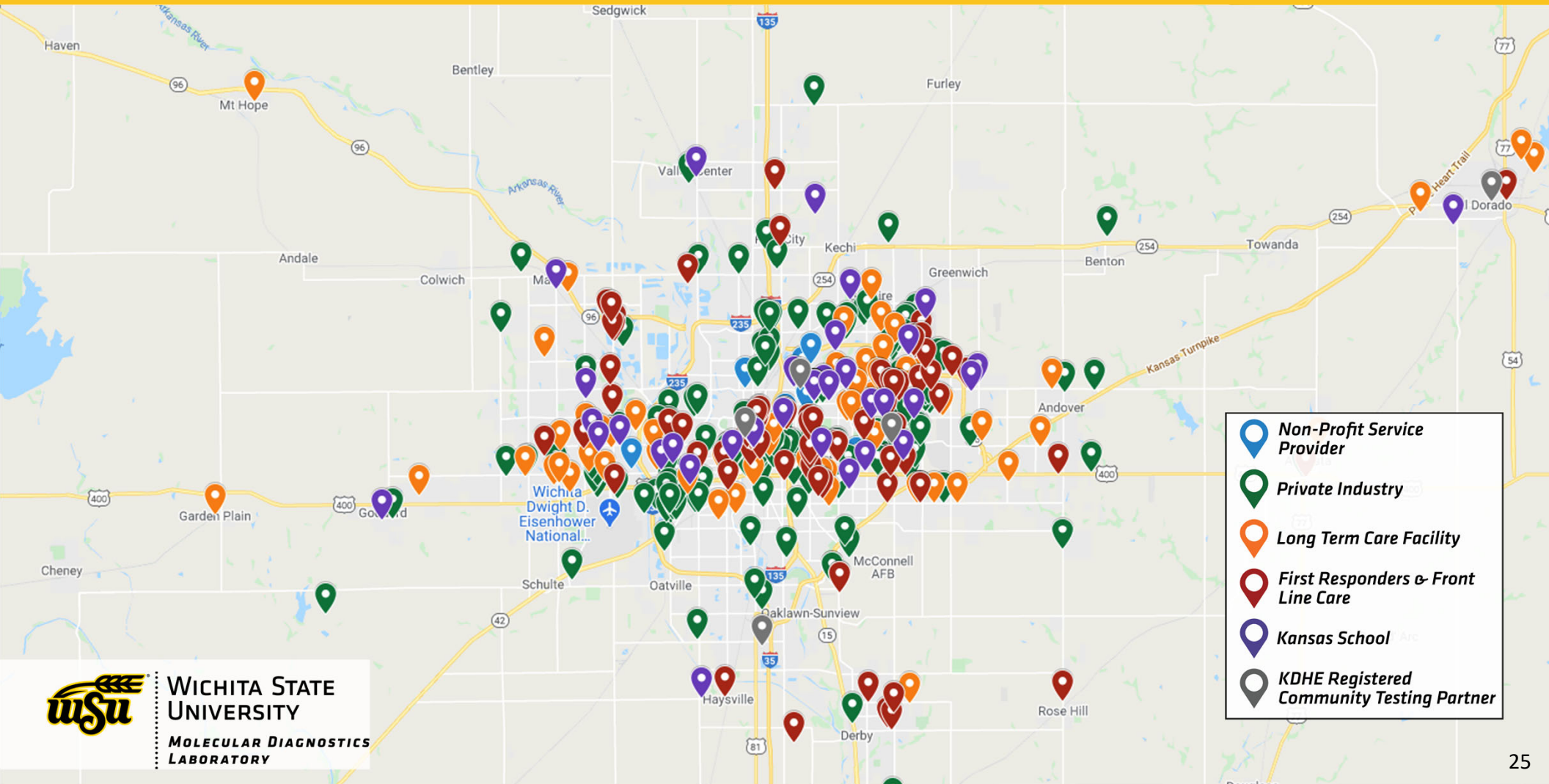
516
Test Collection
Partners in...

19
Counties

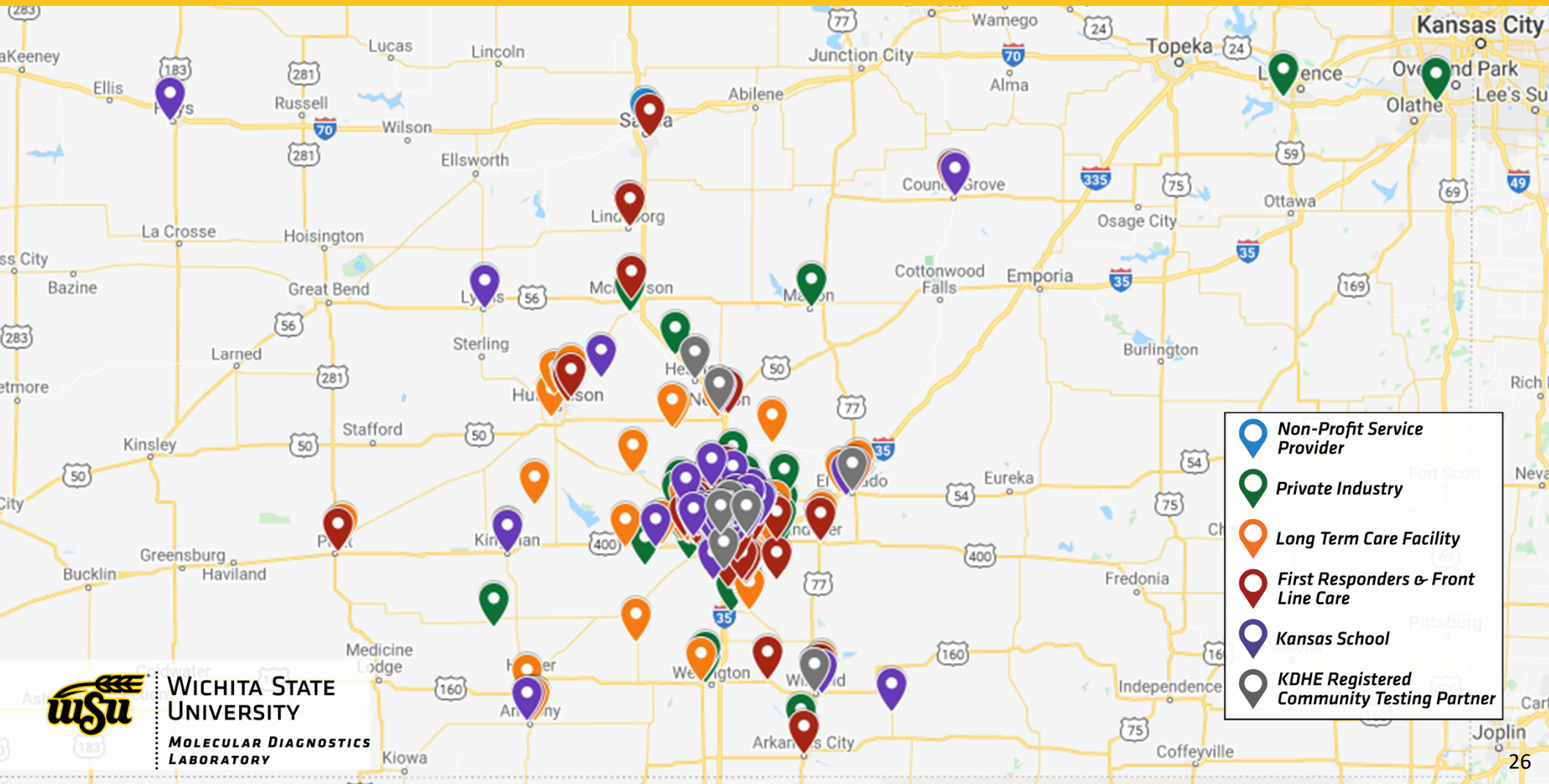
26

Wichita State Students
Hired into Interdisciplinary
Applied Learning Roles

Wichita State MDL Sedgwick County Test Collection Partners



Wichita State MDL Kansas Test Collection Partners



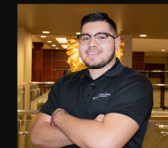
Molecular Diagnostics Laboratory Applied Learning Students

- 26 Students Hired
- All Paid Positions
- 8 out of 9 Wichita State Colleges Represented
- Multiple Interdisciplinary roles
 - Marketing, customer service, account management, tech support, supply chain, specimen intake, specimen processing, test kit productions, etc.



[See all MDL Applied Learning Students ->](#)

Rafael Uribe-Olivares
MAJOR: EXERCISE SCIENCE
HOMETOWN: GARDEN CITY, KANSAS



“This opportunity will provide me with a chance to work with some of the top medical professionals in the city of Wichita and increase my networking opportunities, all while making a difference in my community. I am excited to work with this amazing team.”

FUN FACTS ABOUT ME

1. Loves weightlifting
2. Never attended a funeral or a wedding
3. Ambidextrous

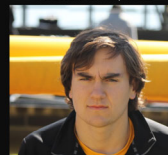
APPLIED LEARNING PROJECT TITLE:

MOLECULAR DIAGNOSTIC LAB, PROCESSING TECHNICIAN SUPPORT

Uribe-Olivares assists in the processing of COVID-19 tests and builds test kits that will be distributed among the community. This opportunity has allowed him to obtain professional experience for his future career.

LEARN MORE ONLINE AT [WICHITA.EDU/APPLIEDLEARNING](https://wichita.edu/appliedlearning)

Chad RoseBerger
MAJOR: BIOLOGY
HOMETOWN: WICHITA, KANSAS



“I am honored to meet medical laboratory science professionals that were able to guide me in my future goals. This applied learning opportunity will give me experience in the academic field I will be going into.”

FUN FACTS ABOUT ME

1. Student Government Associations Senator
2. Member of Sigma Phi Epsilon Fraternity
3. Own a rescue dog

APPLIED LEARNING PROJECT TITLE:

MOLECULAR DIAGNOSTIC LAB, PROCESSING TECHNICIAN SUPPORT

RoseBerger assists in the process of COVID-19 testing while performing tasks that impact the community during this crisis. This opportunity has allowed him to obtain professional experience for his future career.

LEARN MORE ONLINE AT [WICHITA.EDU/APPLIEDLEARNING](https://wichita.edu/appliedlearning)

Nicole Ukoefreso
MAJOR: CHEMISTRY
HOMETOWN: WICHITA, KANSAS



“I'm excited to be a part of a lab that will help the community get results of COVID-19 back while improving public health.”

FUN FACTS ABOUT ME

1. Born in Nigeria
2. Plays volleyball twice a week
3. Never attended a concert before

APPLIED LEARNING PROJECT TITLE:

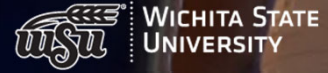
MOLECULAR DIAGNOSTIC LAB, PROCESSING TECHNICIAN SUPPORT

Ukoefreso supports the molecular diagnostics lab and the processing of molecular diagnostic kits. This opportunity has allowed her to obtain professional experience for her future career.

LEARN MORE ONLINE AT [WICHITA.EDU/APPLIEDLEARNING](https://wichita.edu/appliedlearning)

Downtown Investments

A Great City Must Have A Vibrant Downtown



Exploring combining the strengths of WSU's College of Health Professions with KU's Medical School-Wichita into one "academic health science center" facility to address health needs and diversity and grow the Kansas economy.



WSU INNOVATION CAMPUS

The envy of universities around the globe



2012

TODAY



Current Partnerships on Innovation Campus



Project updates



**Woolsey Hall (2022)
Business School**

**FUTURE NetAPP
under construction
600 employees —
Q4 2021**

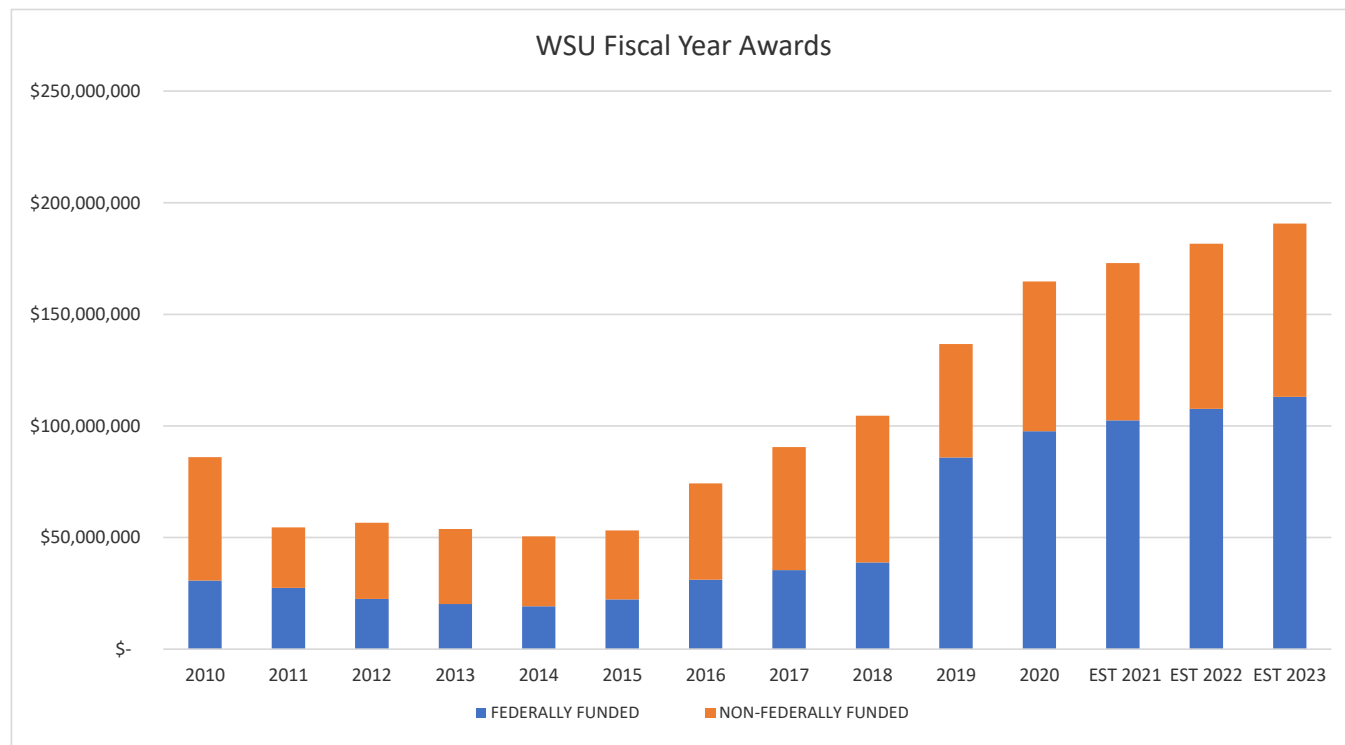
**SMART Factory @ Wichita
(Deloitte) opens Q2 2021**

**Future National Institute
Digital Transformation
groundbreaking July 2021**



**WICHITA STATE
UNIVERSITY**

Research Trends and Wichita State



Transition to Virtual Learning

- As the pandemic escalated in Fall, universities across the country made the difficult transition to virtual learning.
- Students were notified starting on May 20 regarding plans for Fall course delivery.
- Information was shared by email, posted on the university's COVID website, shared through social media and reiterated at the student town hall meetings.
- The course design plans submitted by faculty were posted to a searchable website for students to view prior to the start of classes.



Types of Virtual Learning and Implementation

- Hybrid – combination of in-person and online content
- Hybrid Online – online content with in-person exams
- Fully Online – Content is ‘on demand’
- Students who were forced to transition to online due to the pandemic were **not charged** additional fees.
- Every learning space was measured for space capacity to meet county health social distancing guidelines.



Refunds

- The late withdrawal date was adjusted to be the last day of classes.
- Housing: we allowed students to cancel their food and housing contracts without penalty. Students were only charged for time spent in housing and meal contracts.
- Parking: provided refunds on a prorated basis to both students and visitors who had an active parking ePermit during for the Fall.



CARES Act resources utilized to keep Wichita State University safe, accessible and affordable

- Emergency Student Aid: **\$10,095,033**
- Facilitate Student Distance Learning: **\$1,824,551**
- Student Housing Safety Support: **\$1,103,308**
- COVID-19 Testing and Contact Tracing: **\$893,431**
- Improve Telework Capabilities of Employees: **\$771,571**
- Public Health and Safety Employees: **\$300,835**
- Personal Protective Equipment (PPE): **\$228,641**
- Other: **\$125,900**



FY 2021 Budgetary Actions

- **\$2.6 million - 2.0%** budget reallocation
- **33 FTEs** no longer funded with tuition/state funding
- Over past five years, **132 FTEs removed** from tuition/state funding
- **\$2.0 million** - Freezing of discretionary expenditures in FY 2020 to create one-time savings to offset anticipated shortfalls in FY 2021
- **\$1.8 million** - Voluntary Separation Incentive Program
- **\$103 thousand** - Staff furloughs/temporary pay reductions for 24 individuals
- **More stringent** hiring review

In Summary, state investment is **CRITICAL**

- Besides our own internal reallocations and resources to help grow the economy, we have also made significant progress with state investment in growing our engineering workforce
- We are requesting: for FY22 to help provide greater access to higher education opportunities in Kansas to grow the Kansas economy.
 - Extend the University Engineering Initiative Act to FY 2032
 - Invest in digital transformation