



**WABAUNSEE  
USD 329**

# **Enhancing Student Success in Kansas: A Case Study of USD 329-Wabaunsee**

**October 2nd, 2023  
Kansas State Capitol Building**

**Troy Pitsch, PhD  
Superintendent of Schools-USD 329**

## Meet Our Dedicated Team

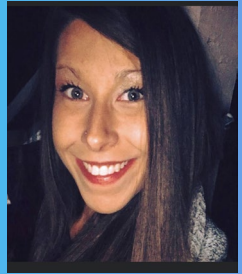
### **Annie Frank: Social Worker**

- Contributions: TLIM Implementation Specialist for USD 329



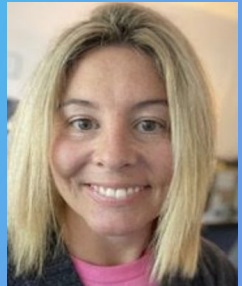
### **Jordan Dunn: Elementary Counselor**

- Contributions: TLIM Program Coordinator for USD 329



### **Callie Meinhardt: HS Counselor**

- Contributions: TLIM High School Integration Specialist

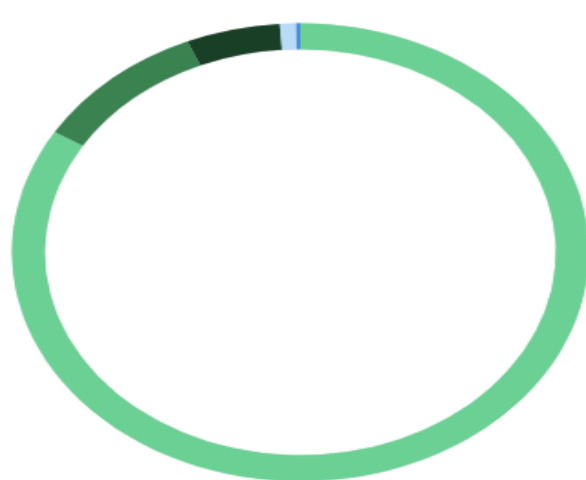


# Enrollment Demographics



Female 48% Male 52%

## Enrollment by Diversity



- 83.8% White
- 9.8% Hispanic/Latino
- 5.3% Two or more races
- 0.9% American Indian or Alaska Native
- 0.2% Black or African American

Native Hawaiian or Other Pacific Islander and Asian or Asian Pacific Islander are not included in this breakdown due to an enrollment of 0%.

Students on free or reduced price lunch

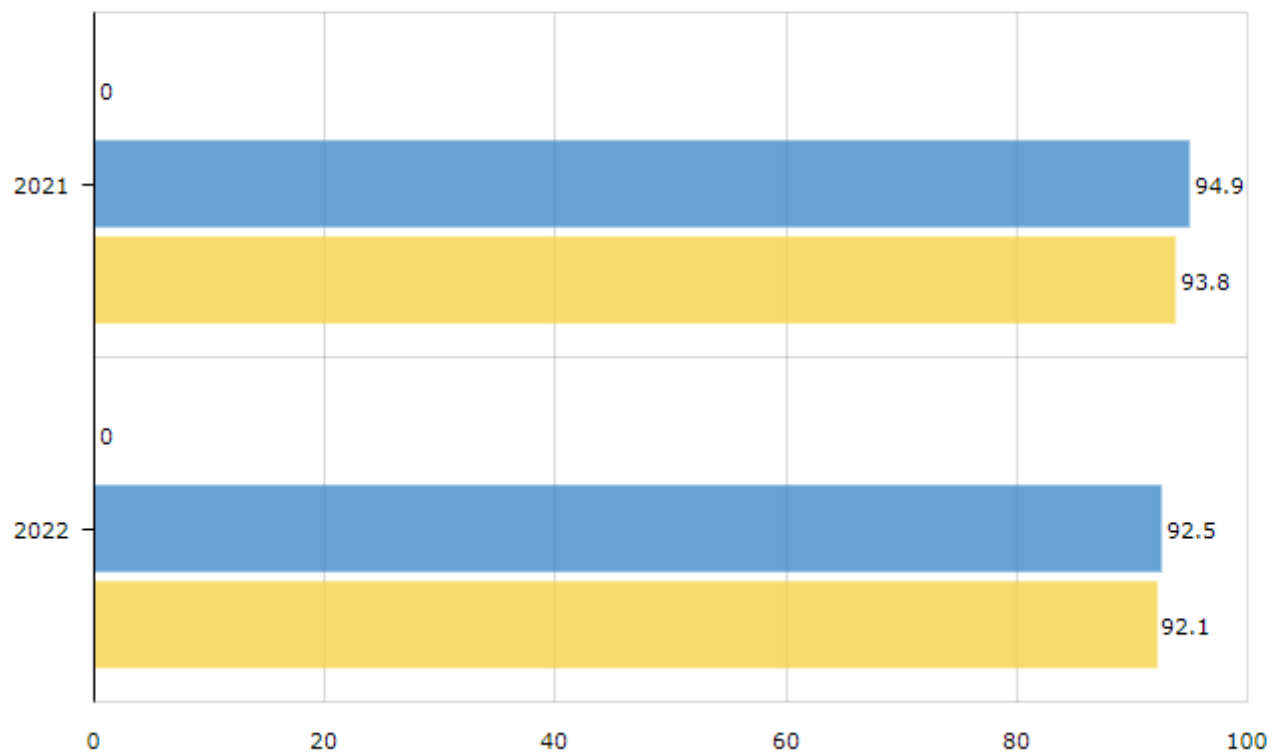
21.2%

Students learning English (average)

N/A

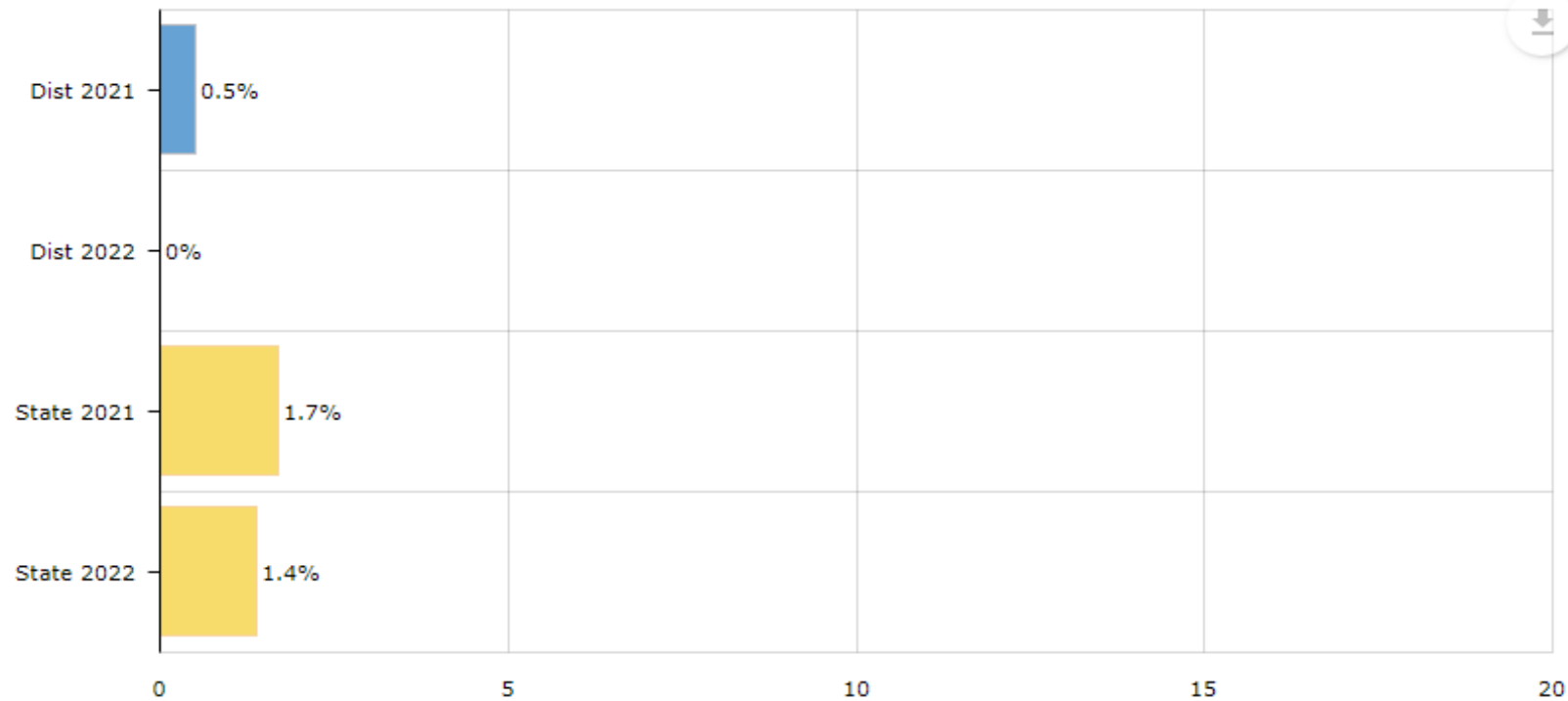
# Attendance Rate

Attendance Rate



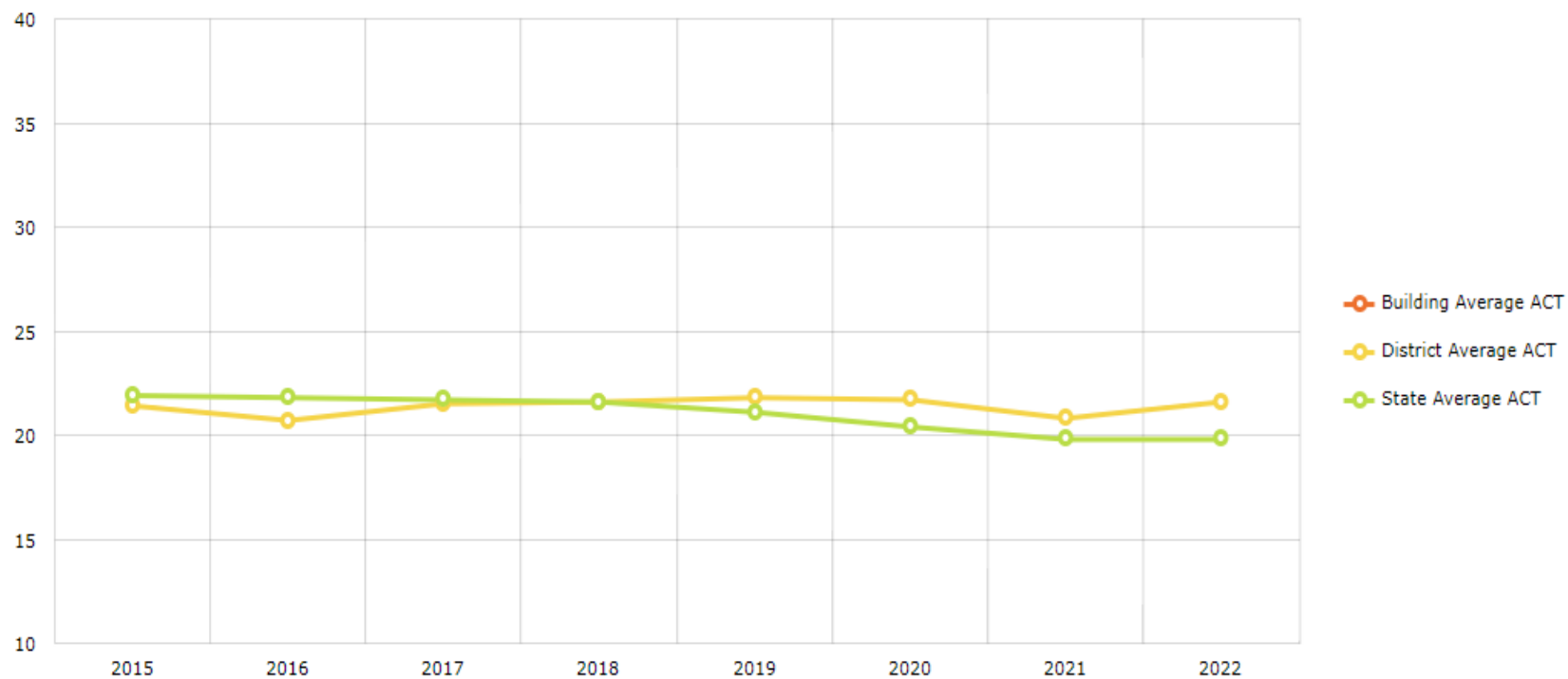
# Dropout Indicators

Dropout Rate (All Students Subgroup)



# ACT Results

ACT Average Composite



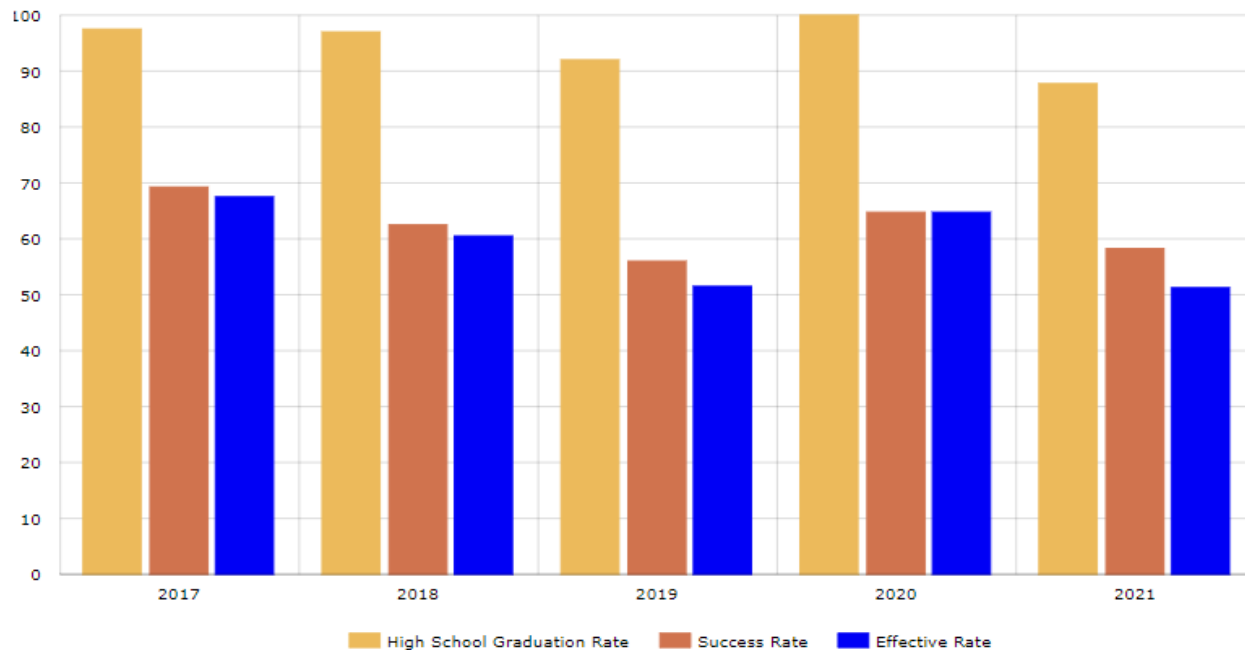
# KAP Student Performance Outcomes 2018-2022

Percent of All Students Proficient in Math				
Subject	2018	2019	2021	2022
Wabaunsee	40%	43%	47%	50%
Woodson	32%	29%	30%	33%
Hoxie	35%	37%	31%	30%
Conway Springs	27%	39%	32%	35%
Lyndon	34%	31%	27%	30%
Oakley	22%	30%	20%	24%
Ellinwood	22%	28%	30%	28%
Central Plains	39%	37%	39%	41%
Mission Valley	25%	31%	31%	29%
Uniontown	26%	31%	31%	32%
Oswego	34%	28%	22%	19%
State Avg.	33%	33%	28%	29%

Percent of All Students Proficient in English Language Arts				
Subject	2018	2019	2021	2022
Wabaunsee	39%	41%	41%	44%
Woodson	32%	28%	38%	36%
Hoxie	40%	37%	35%	31%
Conway Springs	38%	36%	35%	36%
Lyndon	37%	39%	38%	32%
Oakley	35%	37%	27%	27%
Ellinwood	25%	31%	31%	22%
Central Plains	47%	45%	45%	46%
Mission Valley	34%	29%	42%	31%
Uniontown	36%	39%	38%	36%
Oswego	44%	38%	38%	26%
State Avg.	37%	37%	35%	32%

Source: Kansas Dept. of Education

# Post-Secondary Progress



**Kansans Can Lead the World!**

**Graduation: 95%**  
**Effective Rate: 70-75%**

**Five Year Graduation Average:**

95

**Five Year Success Average:**

62

**Five Year Effectiveness Average:**

59

[Download Postsecondary Progress Report](#)

\* Reflects District Level Aggregate Data

\*Five year averages are calculated based on available data and rounded to the nearest whole number.

95% Confidence Interval for the  
Predicted Effectiveness Rate

55.0 - 57.7





# THE LEADER IN ME

USD 329 WABAUNSEE SCHOOLS -- OCTOBER 2, 2023 -- TRAINING AND ORIENTATION





“

IF YOU WANT TO MAKE MINOR CHANGES IN  
YOUR LIFE, WORK ON YOUR BEHAVIOR.  
BUT IF YOU WANT TO MAKE SIGNIFICANT,  
QUANTUM BREAKTHROUGHS,  
WORK ON YOUR PARADIGMS.”

”

--- STEPHEN R. COVEY ---



# 5 CORE PARADIGMS

## 5 Core Paradigms

LEADERSHIP

1

**Everyone can be a leader.**

NOT: Leadership is for the few.

POTENTIAL

2

**Everyone has genius.**

NOT: A few people are gifted.

CHANGE

3

**Change starts with me.**

NOT: To improve schools the system needs to change first.

MOTIVATION

4

**Empower students to lead their own learning.**

NOT: Direct and control student learning.

EDUCATION

5

**Educators and families partner to develop the whole person.**

NOT: Educators focus solely on academic achievement.

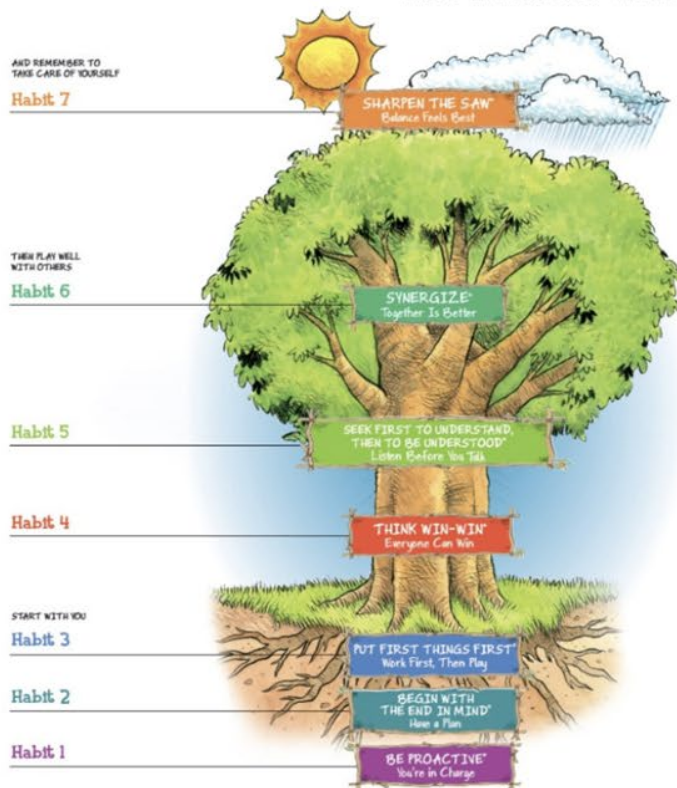
LeaderinMe.

© 2018 Core Co., All rights reserved. ED-1999027-Rev18-1122

# THE 7 HABITS TREE

ROOTS OF EFFECTIVENESS

## The 7 Habits® Tree



**1. Be Proactive®**  
*You're in charge.*



Pause and respond based on principles and desired results.



Use proactive language.



Focus on your "Circle of Influence."



Become a Transition Person.

**2. Begin With the End in Mind®**  
*Have a plan.*



Define outcomes before you act.



Create and live by a personal mission statement.

**3. Put First Things First®**  
*Work first, then play.*



Focus on your highest priorities.



Eliminate the unimportant.



Plan every week.



Stay true in the moment of choice.

**4. Think Win-Win®**  
*Everyone can win.*



Build your Emotional Bank Account.



Have an Abundance Mentality.



Balance courage and consideration.



Consider other people's wins as well as your own.



Create Win-Win Agreements.

**5. Seek First to Understand, Then to Be Understood®**  
*Listen before you talk.*



Practice Empathic Listening: Reflect the speaker's feelings & words.



Respectfully seek to be understood: State your point of view using "I" messages.

**6. Synergize®**  
*Together is better.*



Value differences: Build on others' strengths.



Seek 3rd Alternatives: Use the Path to Synergy.

**7. Sharpen the Saw®**  
*Balance feels best.*



Achieve the Daily Private Victory: Schedule time to renew in all four dimensions of your life.

Poster designed by the leaders at:



# THE 7 HABITS & THEIR CONTENT

EARLY  
LEARNING  
CURRICULUM



ELEMENTARY  
CURRICULUM



MIDDLE SCHOOL  
CURRICULUM



HIGH SCHOOL  
CURRICULUM



7 HABITS OF HIGHLY EFFECTIVE  
TEENS CURRICULUM

TAKE CHARGE: COLLEGE  
READINESS CURRICULUM  
(SEMESTER COURSE)

TAKE CHARGE: COLLEGE  
READINESS CURRICULUM  
(40 MIN. LESSONS)

EXPANDING LEADERSHIP  
CURRICULUM VIDEO



# TIER I CURRICULUM

▶▶ [DATA NOTEBOOKS AND LEADERSHIP NOTEBOOKS COMPARISON](#)

▶▶ [SYSTEMS FOR COLLECTING DATA VIDEO](#)

▶▶ [STEP INTO OUR DATA ROOM VIDEO](#)

**DATA-DRIVEN**

▶▶ [FINDING OUR GAP: SCHOOL IMPROVEMENT PLAN](#)

▶▶ [WHAT CAN WE DO WITH THE MRA? VIDEO](#)

▶ [MRA MEASURES & SUBMEASURES](#)

▶ [MEASURABLE RESULTS TARGETED BY THE LIM](#)

▶▶ [4 DISCIPLINES OF EXECUTION MODEL AND RESOURCES](#)

▶ [WHAT WE'VE LEARNED](#)

▶ [4 DISCIPLINES AT WORK](#)



# ELEMENTARY

DIRECT LESSONS CURRICULUM  
STUDENT-LED CONFERENCES  
LEADERSHIP ROLES







# JUNIOR HIGH

STUDENT LIGHTHOUSE TEAMS  
SERVICE LEARNING  
DIRECT LESSONS CURRICULUM  
TRUST HUDDLES





# HIGH SCHOOL

SELF-DIRECTED LEARNING MODULES  
SERVICE LEARNING  
INDIVIDUAL PLANS OF STUDY





**BE PROACTIVE**



**BEGIN WITH THE  
END IN MIND**



**PUT FIRST THINGS FIRST**



**THINK WIN-WIN**



**SEEK FIRST TO  
UNDERSTAND,  
THEN TO BE  
UNDERSTOOD**



**SYNERGIZE**



**SHARPEN THE SAW**



# Questions from the Committee

