

Kansas Department of Administration
Dennis R. Taylor, Secretary
1000 S.W. Jackson, Suite 500(785) 296-3011

Joint Committee on Arts and Cultural Resources
Statehouse Renovation Update

Mark J. McGivern, Director
Office of Facilities & Property Management
September 25, 2012

— Barry Greis

6 new committee rooms sound treated

Thank you for the opportunity to brief you on the Kansas Statehouse Preservation and Restoration project and the Statehouse Deferred Maintenance work.

NORTH WING and ROTUNDA

- On schedule to complete the finishes of the North Wing, Floors 1 through 5, September 28, 2012.
- 7th Floor Colonnade is restored. The historic light fixtures at the Colonnade were upgraded with LED lights and ballasts.
- Mural below 7th Floor Colonnade has been repaired and restored.
- Dome tours will not be considered until the Copper Dome has been replaced and the support beams for the exterior scaffolding have been removed.
- Committee rooms located in North Wing (6 rooms) and South Wing (7 rooms).
- Legislative Meeting Rooms located on 4 floors. Floors: 5th, 4th, 3rd, and 1st. Located in quad rooms.
- House of Representatives have 55 single person offices and the Senate has 40 single person offices.
- Copy rooms on located on all 6 floors. Floors: 5th (2), 4th, 3rd, 2nd (2), 1st (3) and Ground.
- Four elevators have been refurbished as part of the South and North Wing phases. From the Ground to 5th Floor.
- 5th Floor North Wing has 19 Representatives in the former Legislative Research Department space. And 4 additional Representatives in the North Wing.
- Legislative Administrative Services supply room returns to the 5th Floor.
- Vending machines will be located on the 5th Floor in the Northwest quad room and available 24/7.
- 5th Floor has a new 23 member committee room in the North Wing and a new sub-committee room in the South Wing.
- 4th Floor Doctor of the Day, Northwest quad room.
- State Library on the 3rd Floor.
- Leadership offices on the 3rd Floor for House Speaker Pro Tem and Senate Minority Leader.
- Snack Shop on the 3rd Floor, Northwest quad room.
- 2nd Floor has 3 new committee rooms in the North Wing and a sub-committee room.
- 2nd Floor Ceremonial Office which was the original Secretary of State's office will be scheduled by Legislative Administrative Services. Room has original wood floor and original dark stained wood wainscot and trim.
- 1st Floor has 2 new committee rooms in the North Wing including House Appropriations.
- 1st Floor Legislative Gathering Room has an historic light fixture which had been used in a closet for the past 100 years. The Gathering Room also has the original exterior west wall of the East Wing.
- 1st Floor committee room has an original vault door restored with a small landscape scene painted on the door. The landscape scene and much of the detailing remained intact and protected under coats of paint.

55 offices
single
4 Leadership offices

VISITOR CENTER and SITE WORK

- Visitor Center and Site Work has begun and will be completed December 31, 2013.
- Install exterior limestone veneer at Visitor Center entrance and exterior staircases from Ground Floor to North Wing plaza level.
- Air-lock entrance vestibule.
- Capitol Police security station, magnetometers, x-ray machines, office and lockers.
- Visitor Center entry lobby with marble floor and Kansas limestone wainscot.
- Built-in visitor seating in main hall.
- Visitor's information desk hosted by tour guides from Kansas State Historical Society.
- Gift Shop, sale counters and storage operated by the Kansas State Historical Society.
- Finishes for floors, walls and ceiling.
- Telephone and data connections for visitors and staff.
- Auditorium / Orientation Room and storage with audio-visual displays.
- Classroom and storage with audio-visual displays.
- Windows (3) at 1st Floor Portico drive through looking down and into Visitor Center.
- Women and Men restrooms.
- Storage cubbies for students and visitors.
- Loading docks and equipment at east and west sides of visitor entrance. Includes trash compactor.
- Slate floors with limestone, brick masonry and gypsum board walls.
- Exposed historic ceiling / floor systems.
- Dining area with tables, chairs and vending machines.
- Casual seating areas.
- Finishes for 2 interior stairways from Ground Floor to 1st Floor at northeast and southwest quads.
- Skylight corridors east and west of Visitor Center.
- Media / educational interview room with carpeting, green wall and sound attenuation.
- Storage spaces.
- Food preparation area and storage for Don's Snack Shop.
- Slate floors, cleaned limestone walls, and lighting at corridors outside of Legislative Research Department and Revisor of Statutes.
- Heating and air-conditioning systems, fire protection systems (sprinklers), water supply, and plumbing fixtures.
- Fire alarm system and security system including cameras and duress alarms.
- Light fixtures, accent lighting, electrical wiring, panels and equipment.
- State Map in the floor made from marble with 105 Counties and designations donated by the Kansas Association of Counties.
- Site Work will remain enclosed by construction fencing until the Copper Dome and Roof Replacement projects are completed and the Site Work completed.

ATTACHMENTS FOR VISITOR CENTER

- Ground Floor Plan 11 x 17 fold out.
- Ground Floor Exhibit & Public Spaces in Historic Statehouse.
- Key Floor Plan for Historic and New Spaces on Ground Floor.
- Rendering of Visitor Center Entry Lobby, Classroom entrance and Historical Society Information Desk.
- Rendering of Classroom space with refurbished light fixtures from Old Supreme Court.
- Rendering of Auditorium with small platform, future video conferencing with refurbished light fixtures from Old Supreme Court.
- Rendering of Gift Shop managed by the Historical Society.

ENHANCEMENTS FROM PRIVATE FUNDING

Work will include:

- Map of state with 105 counties and designations, individual marble pieces for each county in marble floor located north of information desk in main hall. Labor and materials donated by Kansas Association of Counties. Approximate size 15' x 30'.
- Water fountain at 8th Street visitor entrance and driveways.
- Water fountain at East Wing drive. Replica of circa 1879 fountain at base of East Wing exterior grand staircase.
- Flower garden framing the east and west entrances circa 1890.
- Auditorium / Orientation Room and storage with audio-visual displays.
- Classroom and storage with audio-visual displays.
- Mural commemorating the 1st Kansas Voluntary Infantry (Colored) Regiment.
- Mural commemorating U.S. Supreme Court decision *Brown v. Board of Education*.
- Interactive demonstrations and classroom materials, for example, DVDs shown to students and visitors prior to their tours.
- Display cases for educational, technological and historic materials.
- Bas-relief limestone carving at tympanum above North Wing entrance intended by McDonald Brothers Architects. Features state seal.
- Bas-relief limestone carving at tympanum above South Wing entrance intended by McDonald Brothers Architects. Features struggle between slavery & freedom.
- Artwork including sculptures on the Grounds and within the Statehouse.
- Art restoration and cleaning of murals in corridors.

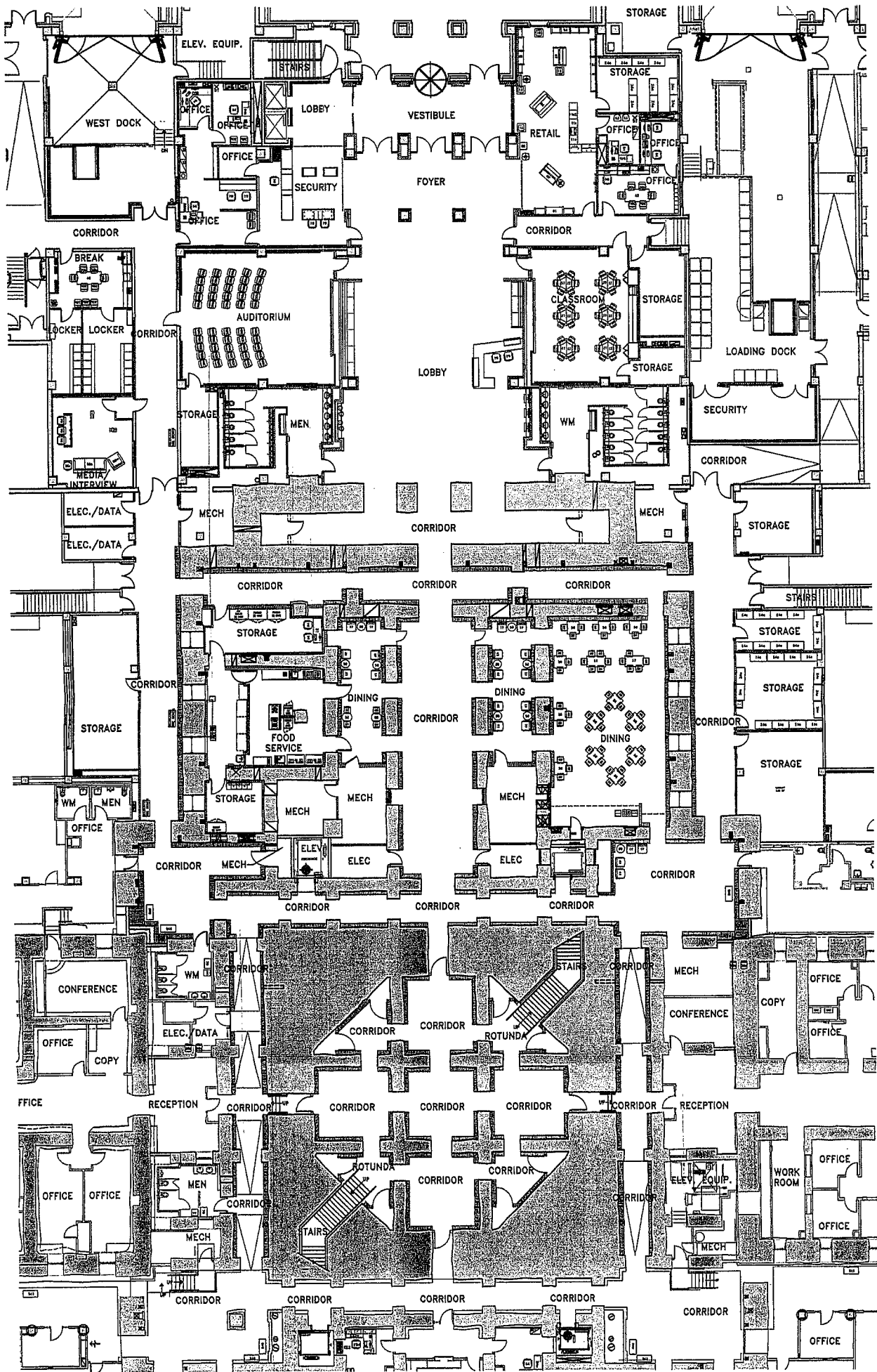
DEFERRED MAINTENANCE PROJECTS

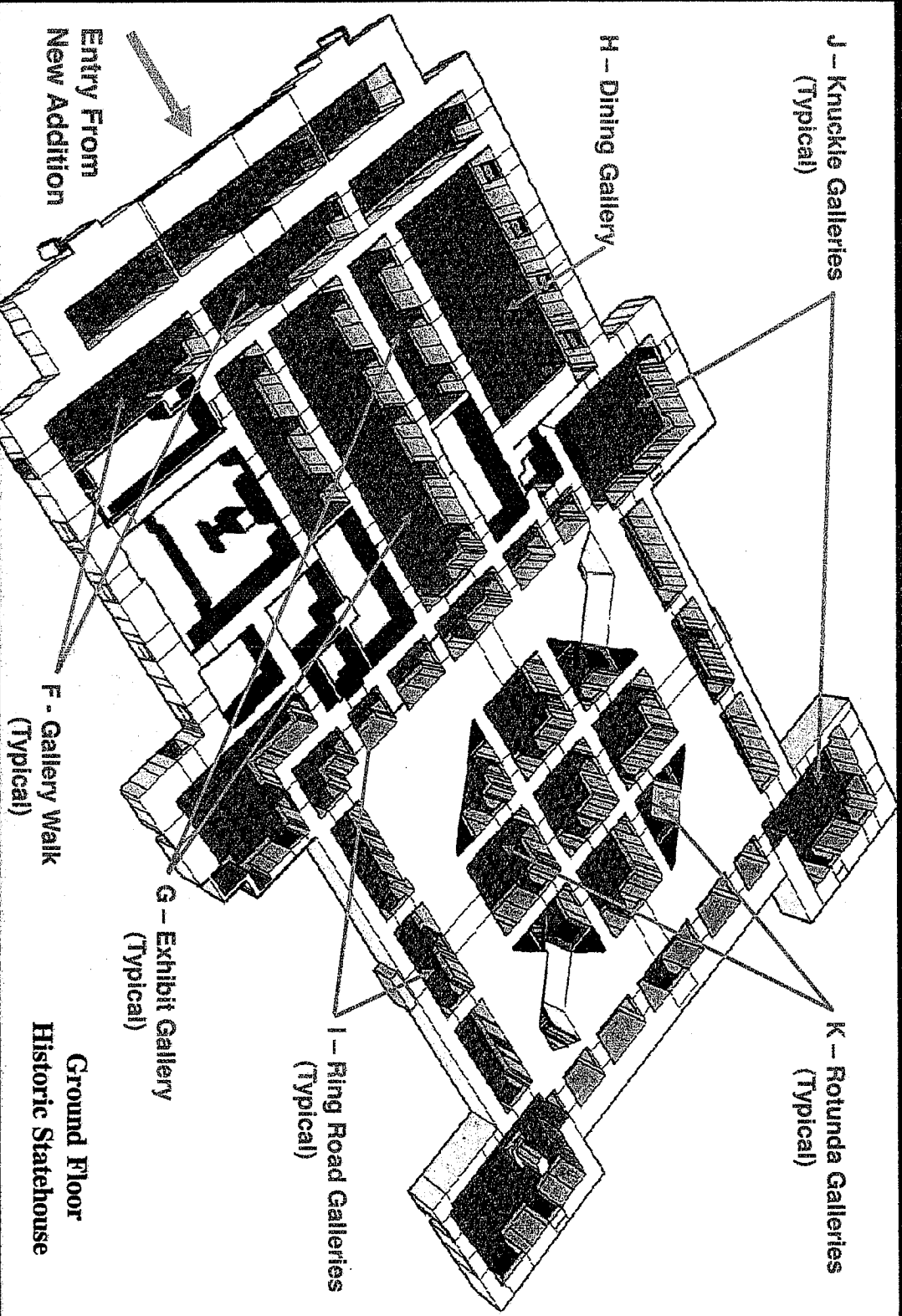
DOCKING CHILLER REPLACEMENTS

- Chiller Replacement for the Statehouse completed in April 2012.

COPPER DOME REPLACEMENT and COPPER ROOF REPLACEMENT

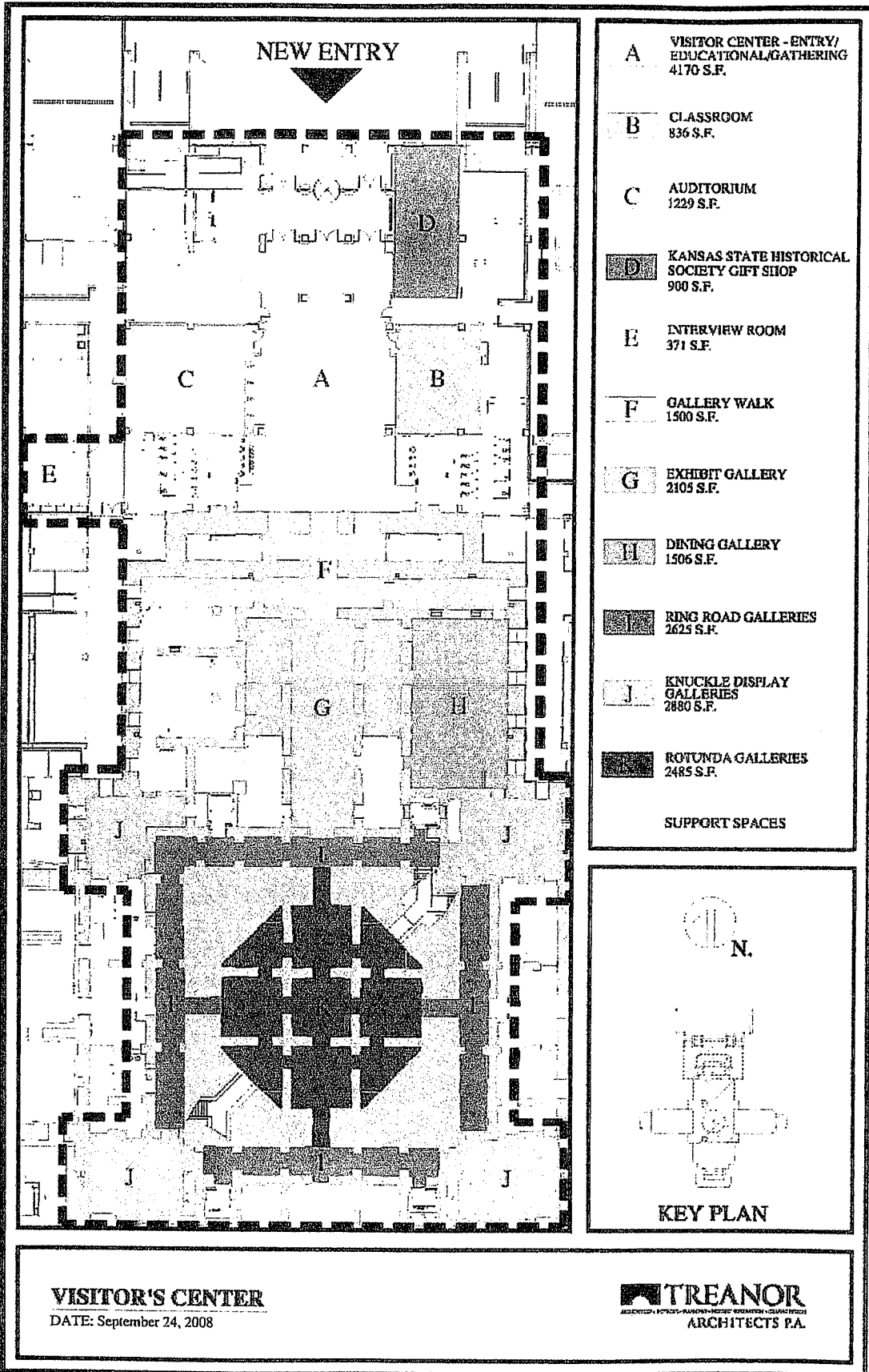
- JE Dunn Construction, construction manager, is reviewing pre-qualification statements submitted by 14 Contractors from across the country including Canada.
- Construction has begun and will be completed in fall of 2013. Baker Roofing is the sub-contractor for the dome and MG McGrath Inc. is the sub-contractor for the roof.
- Portions of the Copper Dome and Copper Roof will be salvaged to the State. Some parts may be appropriate to be saved by the Kansas State Historical Society (KSHS). Other parts may be available in the future Visitor Center Gift Shop of the KSHS.
- Copper is salvaged by Advantage Metals, sub-contractor.

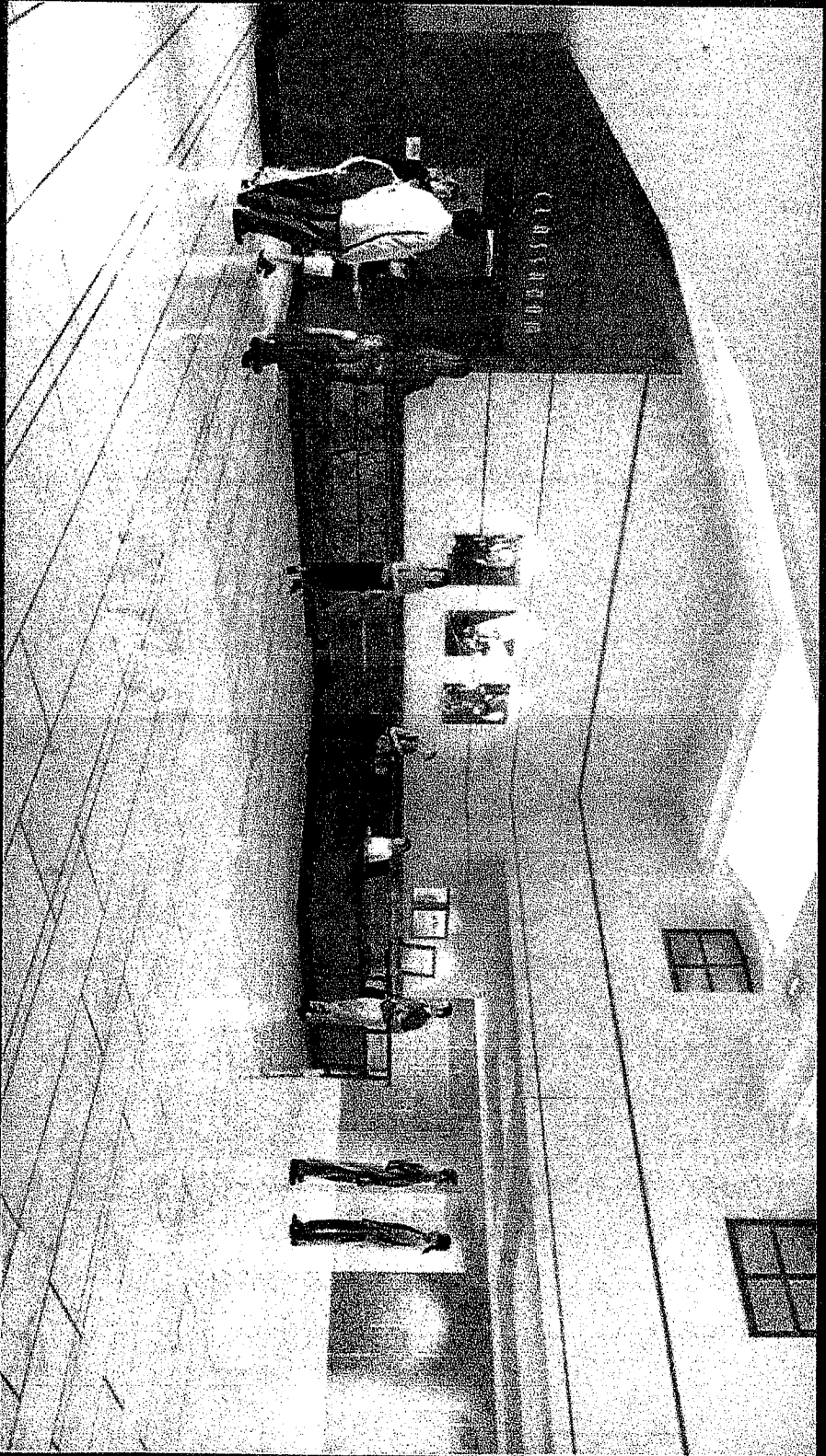




Visitor Center Exhibit & Public Areas

TREANOR
ARCHITECTS, P.A.

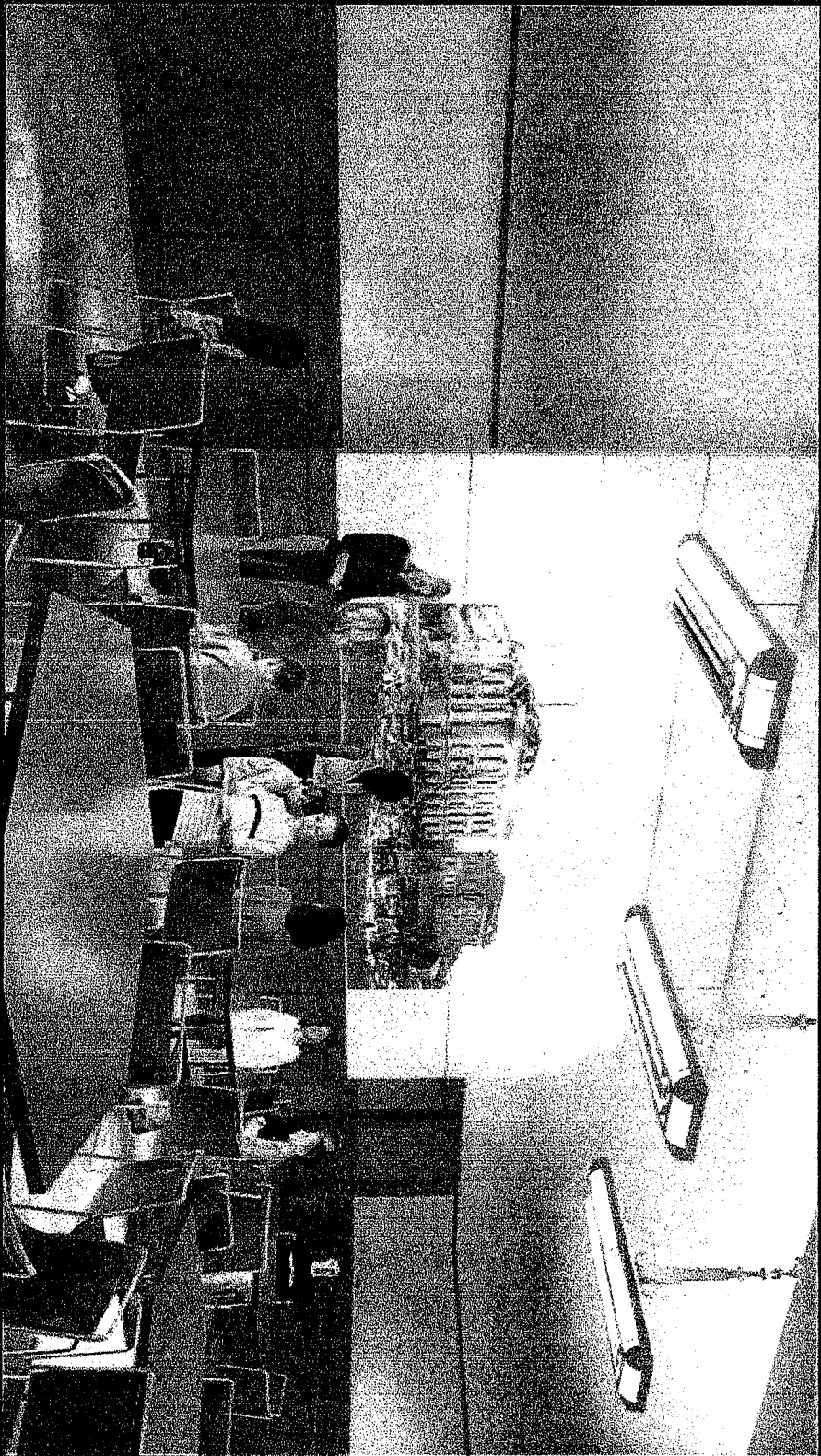




A – Visitor Center Entry Lobby

Visitor Center – Finish of Shell Spaces

TREANOR
ARCHITECTS



B - Classroom

Visitor Center – Finish of Shell Spaces

PTREANOR
ARCHITECTS, PA



C - Auditorium

Visitor Center – Finish of Shell Spaces

PTITTEANOR
ARCHITECTS



D - Gift Shop

Visitor Center - Finish of Shell Spaces

PATRANOR
ARCHITECTS P.A.