

Unemployment Insurance Kansas Department of Labor

Secretary of Labor
Lana Gordon

Labor Market Information Services
Director/Chief Labor Economist
Inayat Noormohmad



Trust Fund

Employer Contributions	Unemployment Insurance Trust Fund	Benefit Payment
Interest Earned		Trust Fund Loan Repayment (Principal Only)

UI Trust Fund monies can only be used to pay benefits and principal loan payment

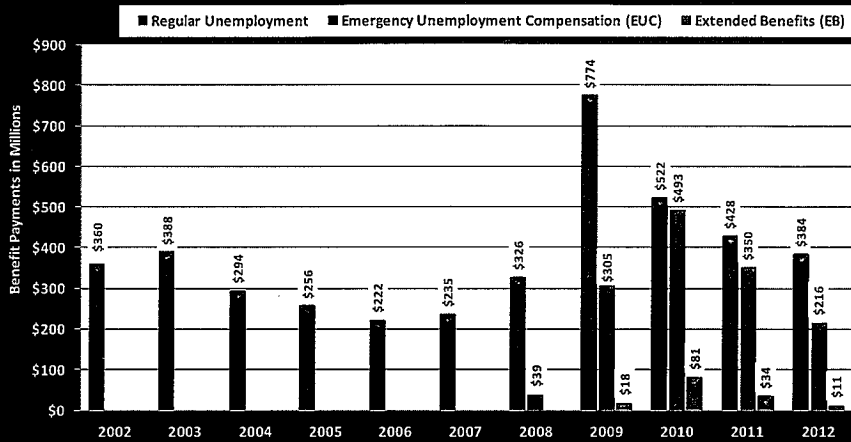
Trust Fund Balance as of 1/26/2013 = \$2,409,092.59

Trust Fund Loans as of 1/25/2013 = \$40,000,000 (from PMIB)



Unemployment Insurance Benefits Paid

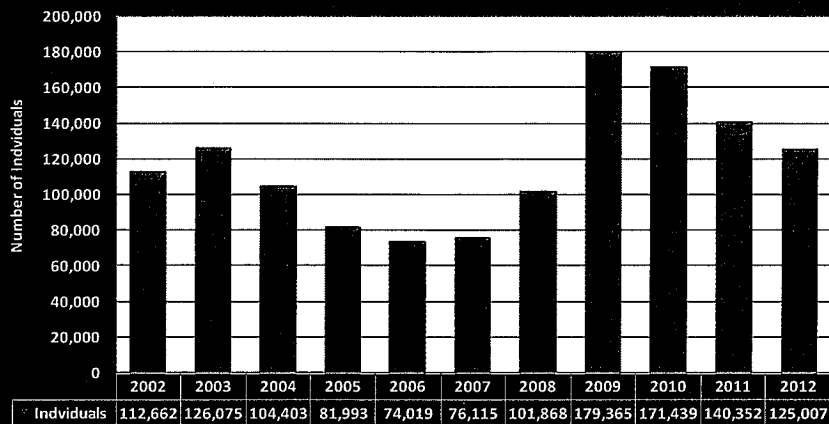
Benefit Payments by Program 2002-2012



Source: Kansas Department of Labor, Labor Market Information Services

Individuals Receiving Payments

Individuals Receiving Payments 2002-2012



Source: Kansas Department of Labor, Labor Market Information Services

Available Benefits

- ❖ **Regular Unemployment**
 - Funded 100% through the State UI Trust Fund
 - Allows up to 26 weeks of UI benefits (depending on employment history and earnings)
- ❖ **Emergency Unemployment Compensation (EUC)**
 - Funded 100% with federal funds
 - Program began July, 6, 2008
 - Allows up to 14 weeks of UI benefits (depending on entitlement for regular benefits)
 - Program is in effect until January 1, 2014
- ❖ **Expired Programs**
 - Extended Benefits (EB) ended 4/7/2012
 - Tier III EUC Benefits ended 6/23/2012
 - Tier II EUC Benefits ended 12/15/2012



Minimum & Maximum Benefit Amounts

Weekly Benefit Amount (WBA)
Kansas
SFY 2003 - 2013

Fiscal Year	Minimum WBA	Maximum WBA	Average WBA
2003	\$86.00	\$345.00	\$272.63
2004	\$87.00	\$351.00	\$269.66
2005	\$89.00	\$359.00	\$268.78
2006	\$93.00	\$373.00	\$278.74
2007	\$96.00	\$386.00	\$290.62
2008	\$101.00	\$407.00	\$305.28
2009	\$105.00	\$423.00	\$337.01
2010	\$109.00	\$436.00	\$336.16
2011	\$108.00	\$435.00	\$315.01
2012	\$111.00	\$444.00	\$316.31
2013	\$114.00	\$456.00	N/A

N/A Not Available



Who Qualifies for Benefits?

- ❖ The individual has made a claim for benefits.
- ❖ The individual has registered for work.
- ❖ The individual is able to work, available for work, and is actively seeking work.
- ❖ The individual has been unemployed and has claimed a waiting period of one week which occurs within the benefit year.
- ❖ The individual has received wages from insured employment in two or more quarters of the base period, and has total base period wages equaling at least 30 times the weekly benefit amount earned from an employer in Kansas.
- ❖ Individual who is not disqualified in accordance with provisions of the law.



Disqualifications for Unemployment Benefits

- ❖ A claimant is disqualified for benefits after one of the below separation issues:
 - ❖ Voluntarily left work without good cause.
 - ❖ Was discharged for misconduct at work.
 - ❖ Refused to accept a suitable job.
 - ❖ Failed to ask for another assignment after the end of a temporary assignment.
- ❖ A one-year disqualification is applied for fraudulent activities.

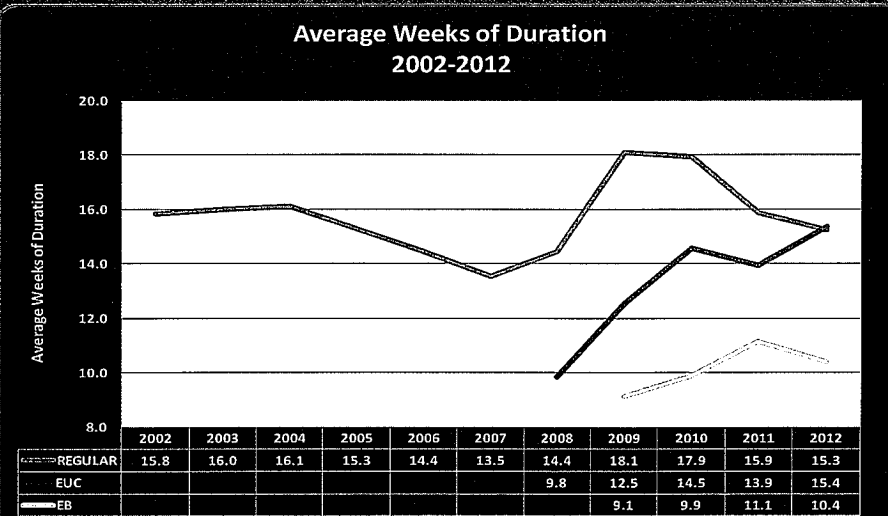


Other Disqualifications for Unemployment Benefits

- ❖ Unable or unavailable to look for and/or accept work.
- ❖ Unemployed because of a labor dispute in which the individual is participating.
- ❖ Claiming or receiving benefits in another state.
- ❖ Receiving disability or worker's compensation payments.
- ❖ Receiving pension from a base period employer or receiving back pay/settlement.
- ❖ Not reporting for or satisfactorily participating in re-employment service.
- ❖ Wages earned by undocumented workers employed illegally.
- ❖ Has reasonable assurance or a contract to return to work the next term or season.
 - Employees of educational institutions
 - School bus or other motor vehicle drivers employed for specific school functions
 - Professional athletes

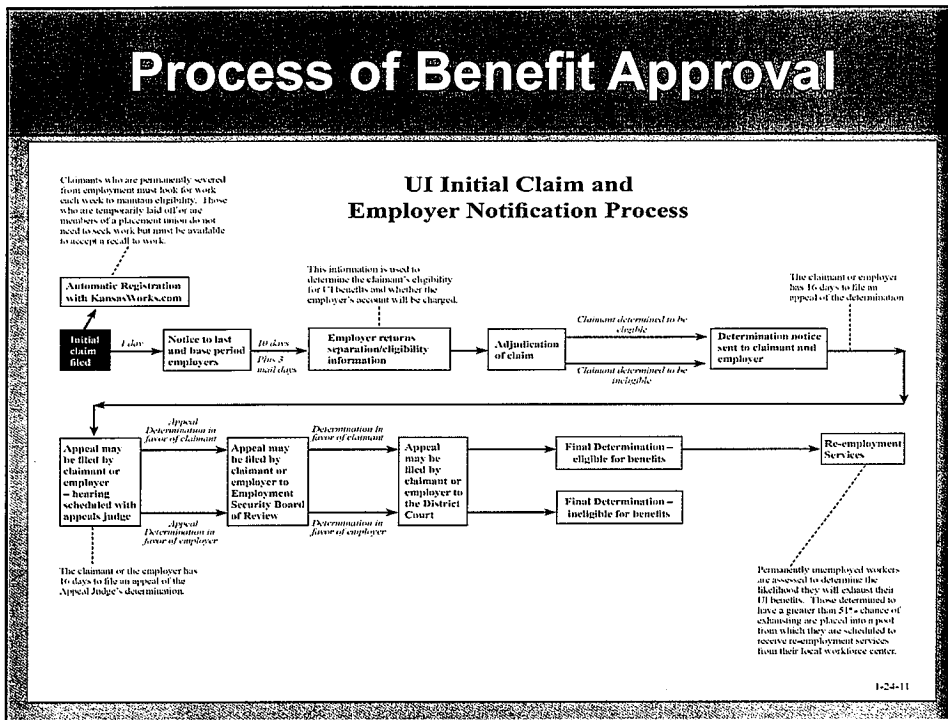


Average Duration of Benefits



Source: Kansas Department of Labor, Labor Market Information Services

Process of Benefit Approval



Shared Work Program

- ❖ Qualifying employers may reduce the working hours of their employees, and those employees can collect unemployment insurance benefits for the remaining hours.
 - Reduced operating costs for employers
 - Provides monetary support for furloughed employees
 - Save UI benefit costs by preventing layoffs
- ❖ To qualify for the Shared Work program, an employer must:
 - Submit a Shared Work application to KDOL
 - Have established an experience rating
 - Have a positive UI account balance
 - Be current on all UI tax payments and quarterly wage report filings



Thank You

Questions?

Kansas Department of Labor
401 S.W. Topeka Blvd.
Topeka, KS 66603-3182
(785) 296-5000

