

# Wichita Biomedical Campus



# Our history in Wichita

## UNIVERSITY OF KANSAS SCHOOL OF MEDICINE

- Looking Back
  - Founded in 1971 with years 3 and 4 only
  - Expanded to a four-year curriculum in 2011
- By the Numbers
  - 201 students (29 in year 1 and 27 in year 2)
  - 102 full-time faculty/80 part-time faculty
  - 1,031 volunteer/community faculty
  - 319 residents in the 15 ACGME-accredited Wichita-based residency/fellowship programs

## UNIVERSITY OF KANSAS SCHOOL OF PHARMACY

- Looking Back
  - Opened Wichita campus in 2011, joining the KU School of Medicine
  - Helped increase school enrollment from 105 to 170 students
- By the Numbers
  - 61 students
  - 6 faculty
  - 2 community/clinical faculty
  - 20 clinical placements throughout Wichita
  - More than 1,000 volunteer hours



# Our history in Wichita

## WICHITA STATE UNIVERSITY

- College of Health Professions consists of 3 schools:
  - School of Nursing
    - Includes graduate and undergraduate degree programs
  - School of Health Sciences
    - Depts. of Communication Sciences and Disorders, Medical Laboratory Sciences, Physician Associate, Physical Therapy, Public Health Sciences. Includes the Casset Speech, Language, Audiology Clinic.
  - School of Oral Health
    - Dept. of Dental Hygiene, AEGD Dental Residency. Includes the Delta Dental of Kansas Dental Hygiene Clinic and the Delta Dental of Kansas Dental Clinic/WSU Dental Practice.
    - The School of Oral Health will not move to the WBC.
- Looking Back
  - Founded in 1980
  - CHP has grown to 7 departments, a dental residency program and over 25 bachelor's, master's and doctoral programs
- By the Numbers
  - Over 1,800 graduate and undergraduate students
  - CHP graduates over 400 health professionals from CHP programs annually



# Wichita Biomedical Campus

## PURPOSE

- Creates an interprofessional community for students, faculty and researchers
- Provides economic opportunity for the region
- Serves patients throughout our region and support the prosperity of our state
- Provides opportunities for research and collaboration in a high-tech facility



# Wichita Biomedical Campus

## PARTNERS

- This joint facility is the first partnership of its kind between two Kansas Board of Regents institutions.
- Vendors have been selected for the project:
  - Helix and CO Architects – architecture
  - JE Dunn/Hutton – construction



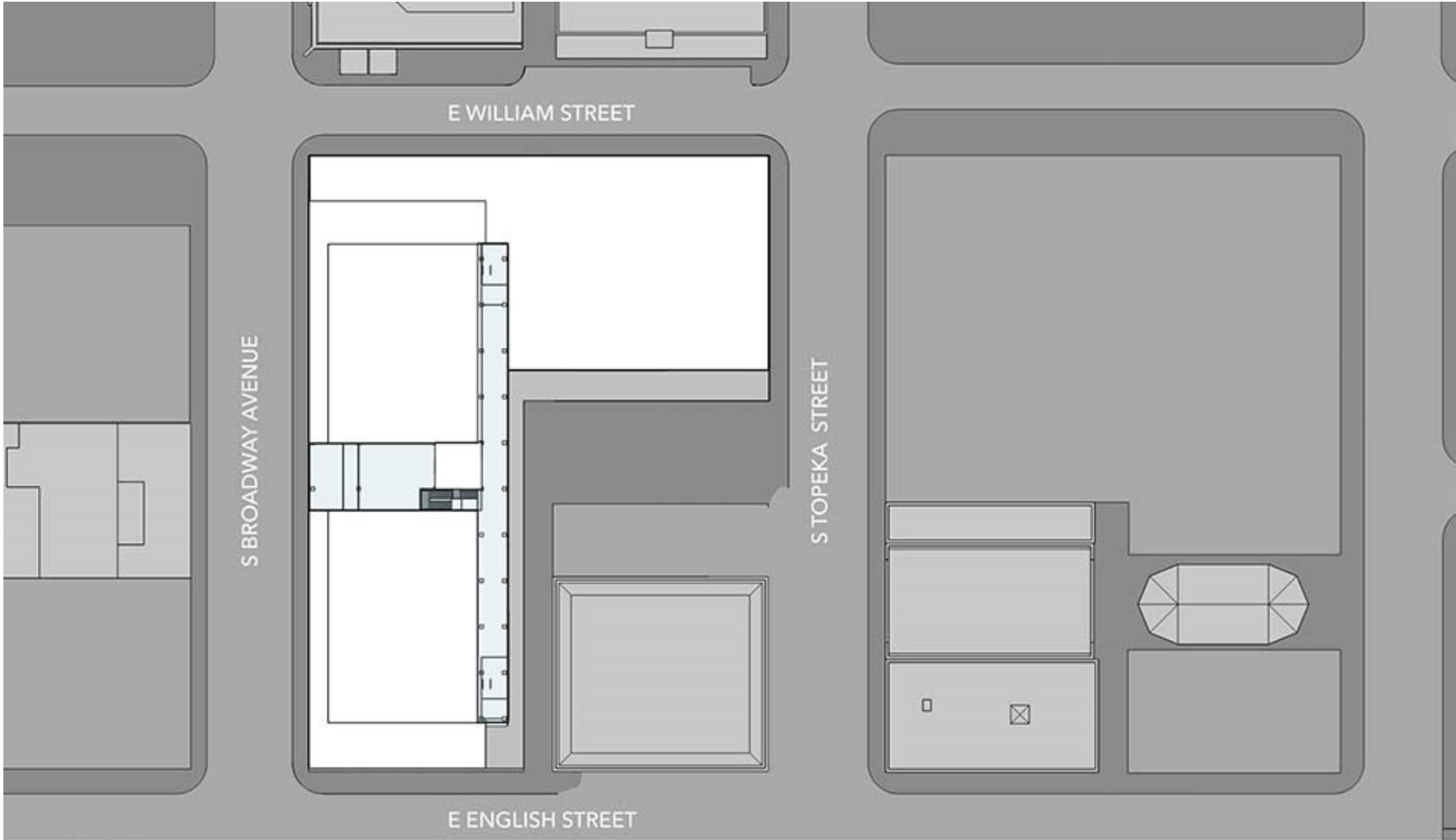
# Wichita Biomedical Campus

## LOCATION

- The Wichita City Council approved two tracts of land located at 214 S. Topeka in the heart of downtown
- Currently located on the land:
  - The Wichita Transit Center, which will move to Delano
  - A parking lot at the southeast corner of Broadway and William

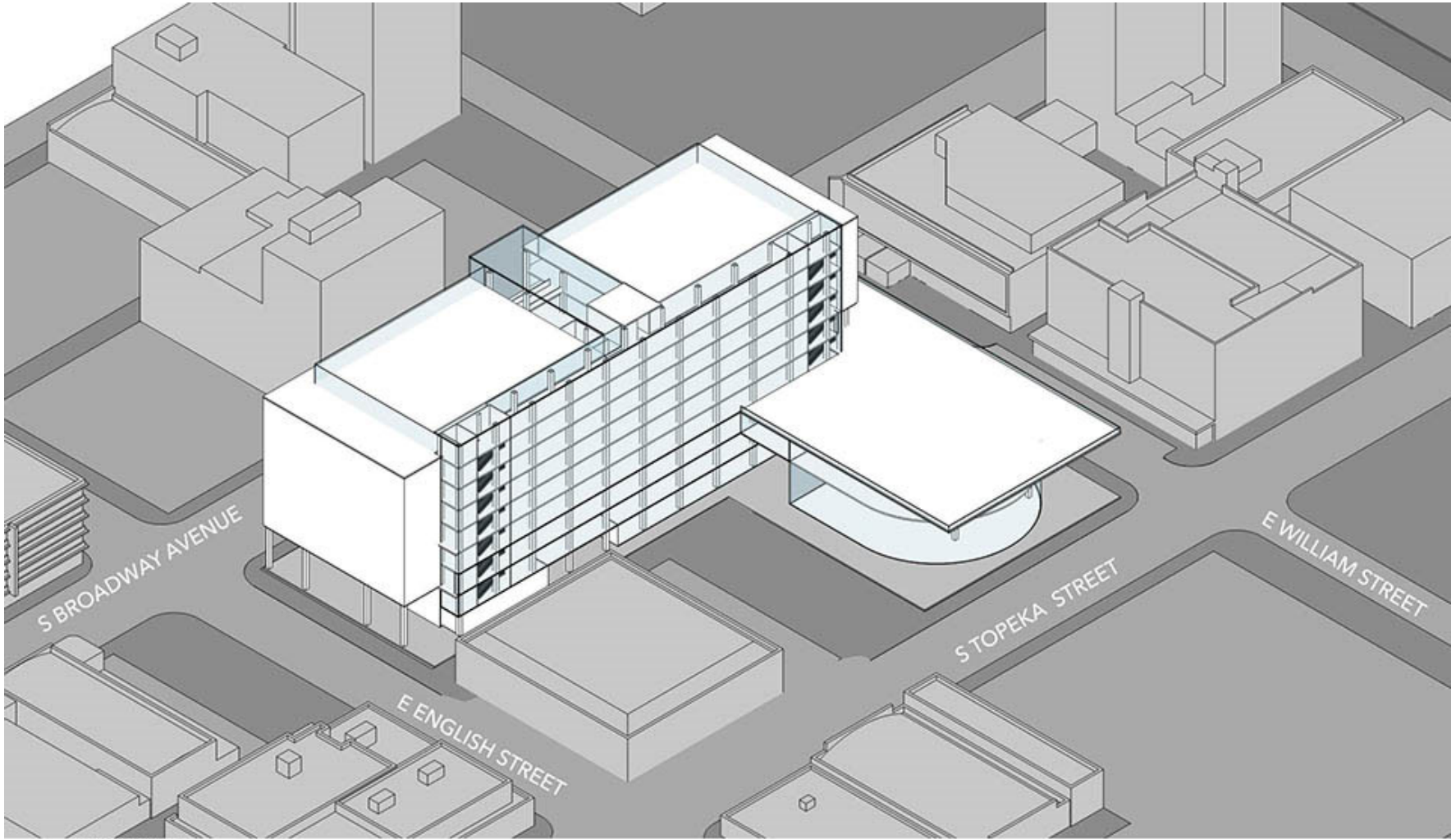






TOP VIEW





AXON VIEW

# Wichita Biomedical Campus

## TIMELINE

- Construction will begin in early 2024
- Estimated completion is 2026



# Wichita Biomedical Campus

## FUNDING

Thanks to the generosity of the state, the Wichita Biomedical Campus has secured the following funding:

\$10 million – State General Fund

\$25 million – American Rescue Plan Act (ARPA)

\*\$142 million – American Rescue Plan Act (ARPA) (see note below)

\$13 million – State General Fund

\$15 million – Strengthen People and Revitalizing Kansas (SPARK)

---

**\$205 million total**

\*An error occurred with the ARPA money in which the legislation cut the funding in half, then replaced that cut with \$30 million in State General Fund money. The net result was a loss of \$41 million that we anticipated to support the project.

