

Testimony Before the House Committee on Government Efficiency and Technology

By Barbara Atkinson, MD

University of Kansas Medical Center

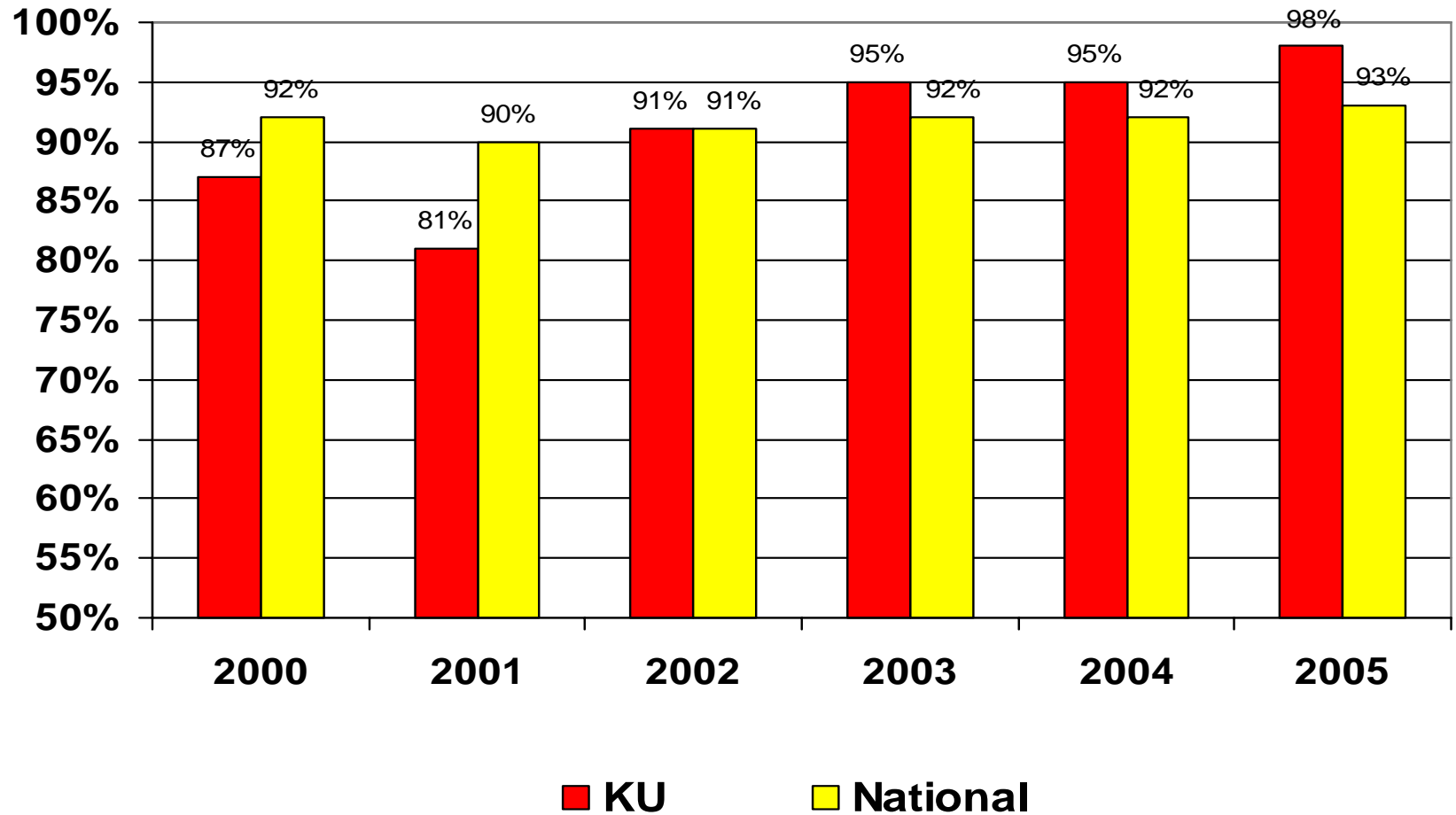
March 8, 2007

New Curriculum



Five first-year medical students from Buhler, Kansas

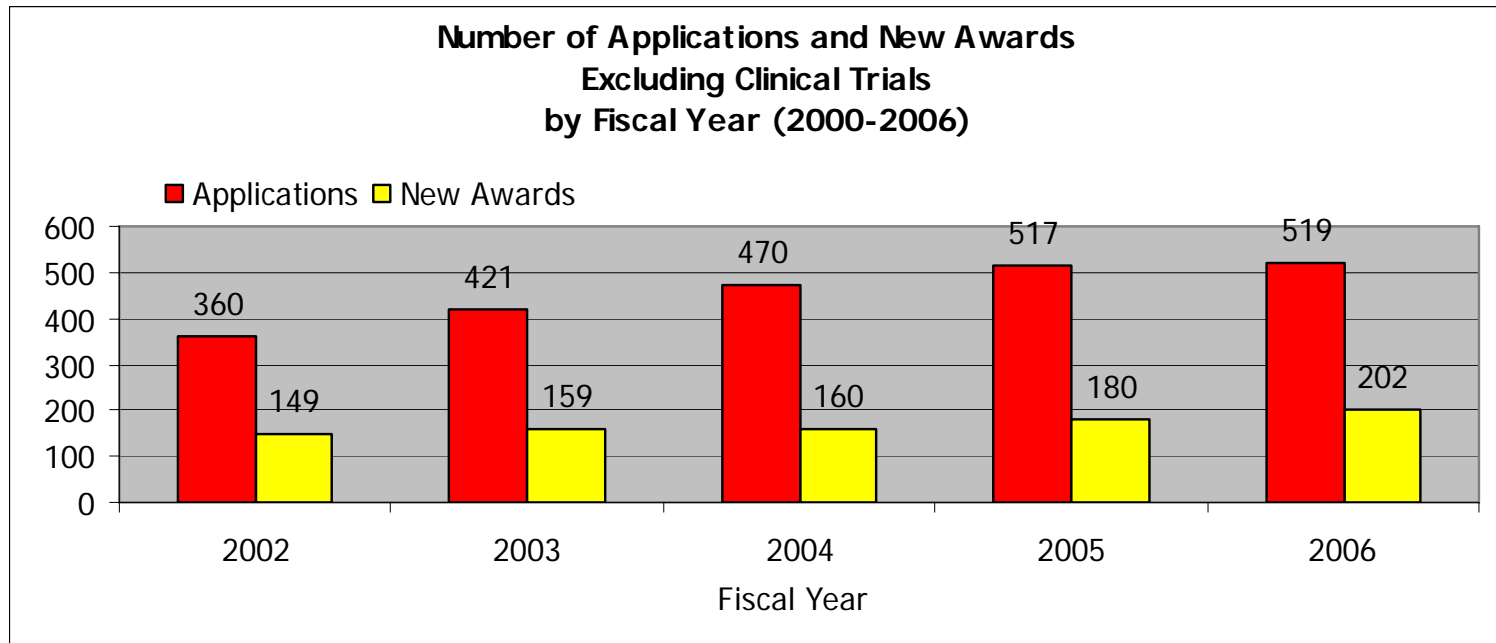
Percent Passing "Step One" on First Attempt: KU vs. National



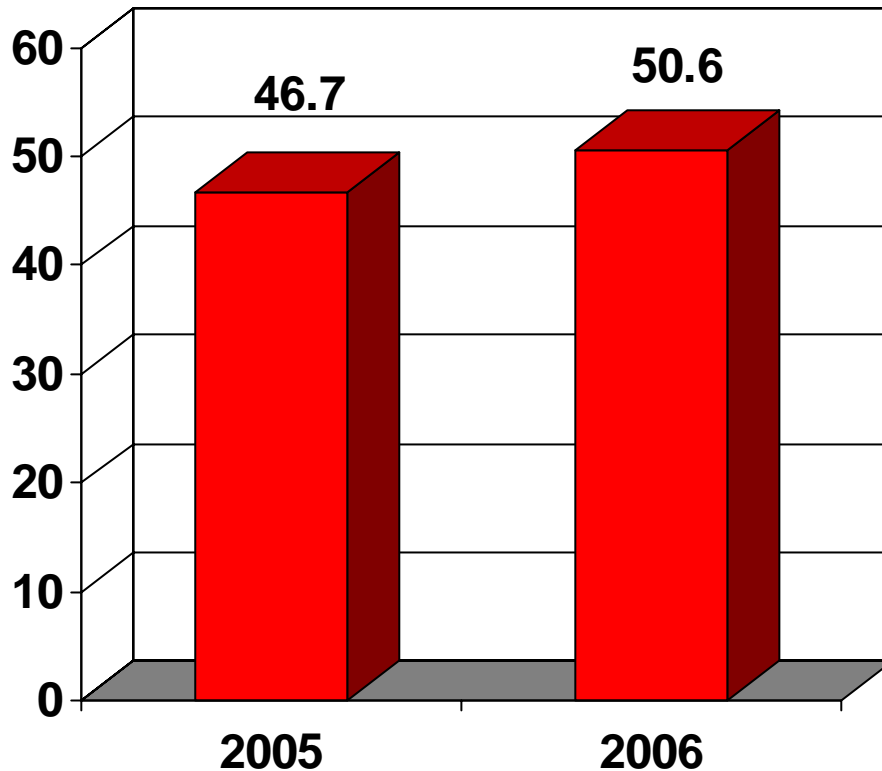
**The KU School of
Medicine ranks
first among all
U.S. medical
schools in placing
graduates in
family medicine
residencies.**



Excellence in Research



Growth in NIH Funding



■ Dollars in Millions

Δ = Nearly
22% Increase

KUSOM: New Positions Recruited In Last Five Years

	Basic <u>Science</u>	<i>Clinical Departments</i>		
		<u>Research</u>	<u>Clinical</u>	<u>Total</u>
FY 03	10	11	19	40
FY 04	15	3	17	35
FY 05	8	6	15	29
FY 06	12	6	15	33
FY 07 <small>(2/7/07)</small>	2	1	9	12
Total	47	27	75	149

Expansion of Existing Clinical Programs

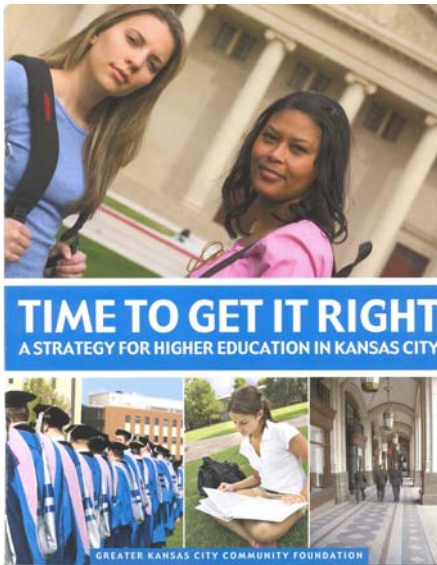
Since 2005, KUMC's clinical programs have added 52 new faculty positions, including:

- Family Medicine ~ 2 positions
- Internal Medicine ~ 17 positions
- Neurosurgery ~ 2 positions
- Neurology ~ 5 positions
- Surgery ~ 4 positions

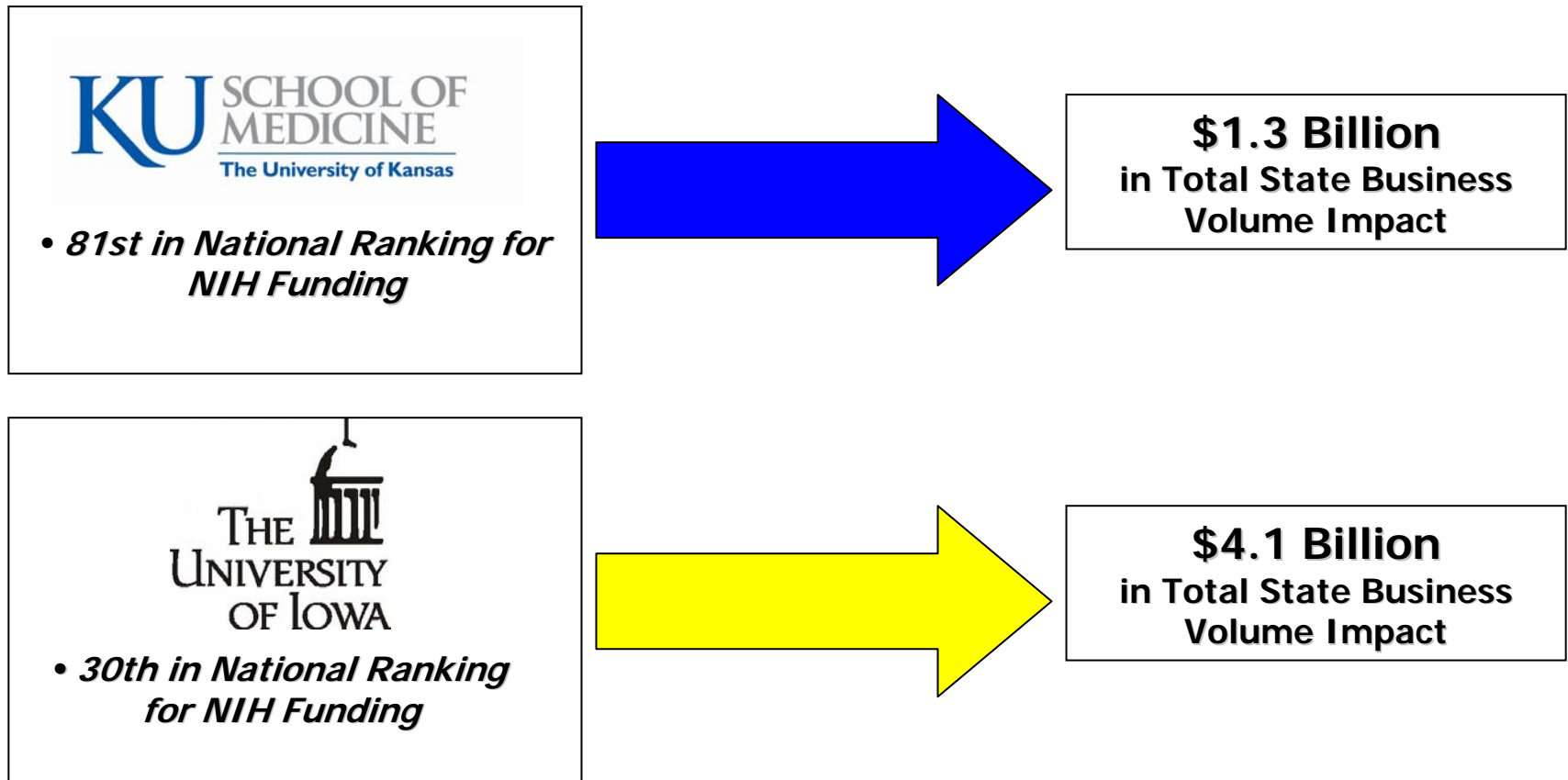
Vision: To Fully Realize Potential

By 2015...

- Kansas City will be a top-20 life science center in U.S.
- KU School of Medicine move into:
 - Top 25 in basic life sciences
 - Top 50 in R&D generally



Potential Economic Impact: Comparing Kansas and Iowa Schools of Medicine



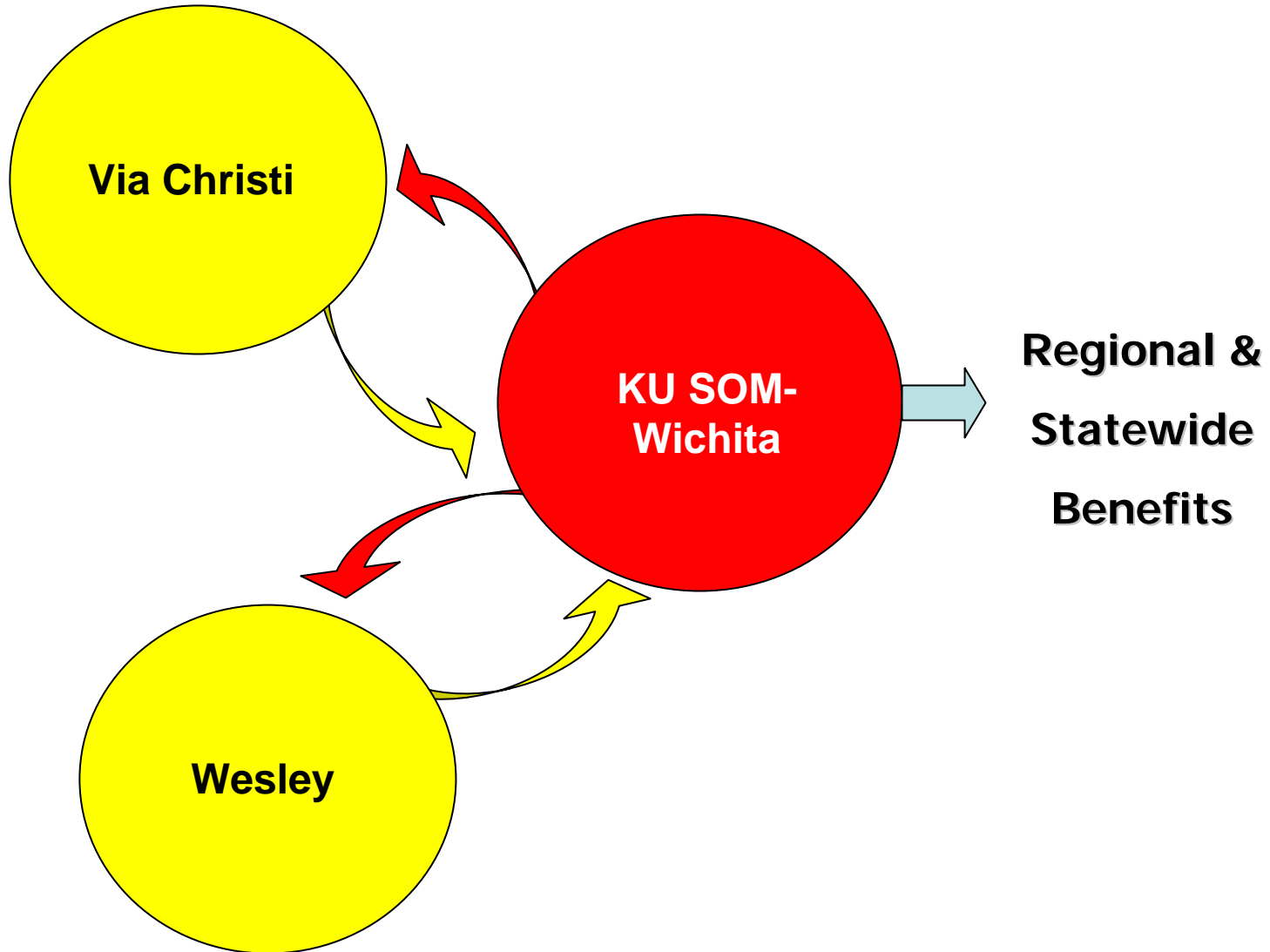
Source: AAMC: *The Economic Impact of AAMC - Member Medical Schools and Teaching Hospitals*, Jan. 2007

Why broader hospital affiliations?

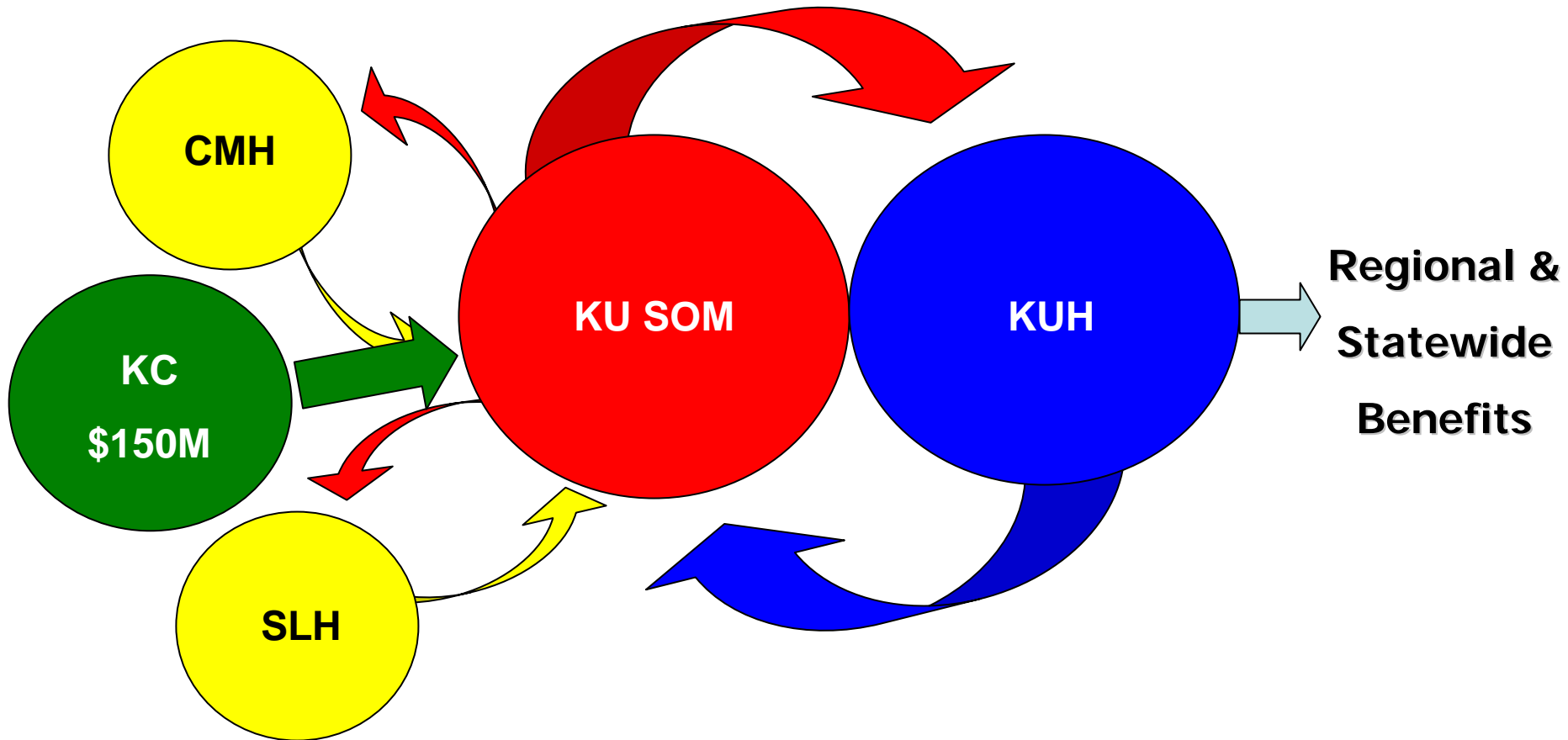
What an Affiliation Means

- **More Doctors**
- **Enhanced Training for Doctors**
- **More Cures**
- **NCI Designation**
- **Community Support**

Multiple Hospital Affiliations at the KU School of Medicine-Wichita



Proposed Broader Multiple Hospital Affiliations in Kansas City



What an Affiliation is Not

- **Detrimental to the faculty physicians**
- **Transfer of Kansas tax dollars to Missouri**
- **Reduction in residents**
- **Compromising our mission to educate doctors and serve indigent Kansans**
- **For the purpose of pursuing stem cell research**

